



අයි පී 6

ஐ பி 6

IP 6

ජන හා නිවාස සංගණනය, ශ්‍රී ලංකාව
குடிசன வீட்டுவசதித் தொகை மதிப்பு, இலங்கை
CENSUS OF POPULATION AND HOUSING
SRI LANKA

1981

සංගණන පරිලෝචකවරුන්ට උපදෙස්
தொகை மதிப்பு மேற்பார்வையாளர்களுக்கான
அறிவுறுத்துரைகள்
INSTRUCTIONS TO SUPERVISORS OF CENSUS

ජනලේඛන හා සංඛ්‍යාලේඛන දෙපාර්තමේන්තුව
தொகை மதிப்புப் புள்ளிவிபரத் திணைக்களம்
Department of Census and Statistics

ශ්‍රී ලංකා රජයේ මුද්‍රණ දෙපාර්තමේන්තුවේ මුද්‍රණය කරන ලදී.

INSTRUCTIONS TO SUPERVISORS OF CENSUS

1. Your Duties.—You will be responsible for the supervision of the Census arrangements and the work of the census enumerators within the Census Circle assigned to you which is an area consisting of a number of Census Blocks. You will be issued an Act of appointment as a supervisor which you should always take with you when doing census work.

You will work under the immediate direction and guidance of the Assistant Commissioner of your area but instructions may, whenever necessary, be issued to you direct by the Commissioner of Census. You have the authority to summon the enumerators of your Census Circle for instruction classes or other Census work to any convenient place within your Circle at any reasonable time.

2. Confidentiality of Census Information.—All information collected at the Census is confidential and you are forbidden by law to divulge it to any person other than a Census Officer. Before commencing your duties you are required to take an Oath or make an affirmation on the prescribed form (Form F 5).

3. List of Census Blocks and Enumerators in your circle.—You will be provided with a list of census blocks and the names and addresses of the enumerators assigned to these blocks and also the names of outdoor enumerators, if any, who will work in your Census Circle on form F 14, 'Supervisor's List of Census Blocks and Enumerators' Pay Sheet.' The various columns of this form should be filled in by you as and when necessary to keep a record of the progress of Census work in each block.

4. Sampling Scheme and Type of Schedules to be used.—While most of the information on population will be collected from the entire population certain additional information on place of birth and usual residence, will be collected only from certain Census

Blocks, which are designated Sample Census Blocks. In these Sample Census Blocks the Population and Housing Schedule (Sample) will be used. In all other areas the Population Schedule (General) will be used.

All census blocks in Municipal, Urban and Town Councils will be sample blocks. In Rural and Estate areas only 1 in every 10 blocks will be sample blocks.

The Schedules to be used are thus :—

- (1) The Population Schedule (General) which contains the questions to be asked from the entire population. No housing questions are found on this schedule.
- (2) The Population and Housing Schedule (Sample) which contains the questions on the General Schedule as well as the additional questions to be asked on a sample basis on 10 per cent of the blocks only i.e. the Sample Blocks. It also contains the housing questions.

The Schedules to be completed in the General Census Blocks and in the Sample Census Blocks in the different areas are as follows :—

In Municipal, Urban and Town Council areas :

All Census blocks are sample blocks. Therefore the Population and Housing Schedule (Sample) should be used.

In Rural and Estate areas outside Municipal, Urban and Town Council areas :

General Census Blocks—The Population Schedule (General) ;

Sample Census Blocks—The Population and Housing Schedule (Sample).

Sample Census Blocks will be those for which the letter "S" has been written on the top right-hand corner of the Pre-listing form for the Block. Your Assistant Commissioner will also indicate to you the Sample Census Blocks in your Circle.

ther his Census Block is a Sample Census Block or not and what schedule should be filled in by him for his Block.

5. Training.—Detailed instructions in regard to census procedures and the method of filling in the Census Schedules are given in Instruction Pamphlet IP4: Enumerators' Reference Manual Duties of outdoor enumerators are explained in IP5: Instructions to Outdoor Enumerators-Final Census. These should be carefully studied by you.

You should also attend the training class for supervisors about which you will be notified.

The success of the census will largely depend on the manner in which the enumerators fill in the census schedules and perform their duties. One of your main responsibilities is to ensure that all your enumerators are adequately trained. Arrangements will be made for an officer of the Department of Census and Statistics to hold a training class for your enumerators at which the Census procedures and instructions on how to fill in the census schedules will be explained. This officer will contact you regarding the date and venue for the class. You should help him in making the necessary arrangements. You should also be present at the class and assist the officer in holding the training class. A practice enumeration should also be conducted by filling in a Census Schedule for an imaginary family.

The instructions relating to cages 24-27 of the Population and Housing Schedule (Sample) and the section on Housing are meant for enumerators of sample blocks. Hence these instructions should be clearly explained to enumerators of sample blocks. These additional instructions should be explained to all enumerators within M.C., U.C. and T.C. areas as all the census blocks in these areas are sample blocks.

All Training Classes for your enumerators should be completed at least 4 days before the Preliminary Census commences on 1st March, 1981.

You will receive from your Commissioner/Assistant Commissioner the Census Schedules, Instruction Pamphlets and other supplies required by your enumerators. These should be distributed as early as possible to your enumerators. More detailed instructions on the distribution of schedules to enumerators will be issued separately. A small reserve should be maintained by you for issue later to any enumerator who needs extra supplies.

7. Census Blocks and Census Block Numbers.—You should see that each enumerator is thoroughly acquainted with the limits of his area which will consist of one or more Census Blocks. If necessary you should arrange for the Grama Sevaka or other officer who prepared the Prelisting form to proceed with the enumerators to show them the location of their respective Census Blocks. You should yourself personally make a tour of your Circle in order to get acquainted with it. It is important to make sure that every building within your Census Circle falls into a Census Block. If you discover any buildings that do not fall into any Census Block, please assign them to a suitable Census Block.

8. The Preliminary Census.—The Preliminary Census will commence on 1st March 1981, and will go on for 10 days. During this period the enumerators will carry out the Preliminary Enumeration in their respective Census Blocks. You should make it a special point to meet all your enumerators during the two days, 2nd and 3rd March, go through the schedules that they have already filled up with them and point out any mistakes that they have made. It is very important that this personal check is made by you on the work of each enumerator on either the 2nd or 3rd March, as it is at this stage you will be able to assess the quality of work of the enumerators and to clarify any doubtful points raised by them. During the rest of the Preliminary Census, i.e. from 4th to the 10th March, please keep in close touch with your enumerators and satisfy yourself that they are carrying out their duties correctly.

9. Serving of Schedules to Chief Occupants in Municipal, Urban and Town Council areas.—If any chief occupant of a housing unit in an MC, UC or TC Area requests the enumerator to hand over the schedule to him so that he can fill it up himself then the enumerator may agree to this and give him a schedule. The enumerator should make a note "Schedule handed over" on the F 1 form and collect the completed schedule before the completion of the Preliminary Census i. e. before 10th March, 1981.

It may not be necessary to hand over the schedule again for the Final Census as at the Final Census it is only necessary to check on whether the persons included at the Preliminary Census are present or not.

10. Notification of Preliminary Census Results.—At the end of the Preliminary Census please obtain from all your enumerators the figures of the total number of persons enumerated by them during the Preliminary Census. Please add up those figures to obtain the total number of persons enumerated within your Circle. This total number should be entered on the Form F 15, "Preliminary Census Results" and handed over to your Assistant Commissioner personally or sent to him by express post. (If you intend to send it by express post, please obtain an envelope from your Assistant Commissioner.)

11. Final Census Procedure.—Please request all your enumerators to meet you on the 15th or 16th March and go through with them once again the procedure that should be followed at the Final Census (vide paragraph 4.13 of Reference Manual IP 4.) Please make quite sure that all your enumerators are fully conversant with the exact nature of the duties they have to perform on the Final Census night, i.e. the night of 17th March, 1981.

If there are any out-door enumerators in your Circle, you should inform them of the exact location of their points of duty or patrol beats, accompanying them to the places if necessary. You should also explain to them their duties as set out in Instruction Pamphlet IP 5.

Please also make sure that both the general and Out-Door Enumerators have sufficient supplies of Enumeration Passes and Blank Schedules for use on the Final Census night.

12. Action if any Enumerator Falls ill.—When you meet your enumerators on the 15th or 16th March, please request them to inform you immediately if owing to an accident, sudden illness or other unforeseen reason they are unable to carry out the enumeration on the Final Census night. If for any reason an enumerator is unable to carry out his duties on the Final Census night, please arrange at once for a reserve enumerator to do his work. If no reserve enumerators have been attached to you, your Assistant Commissioner should be able to provide you with one. If you fail to obtain a reserve enumerator then you should proceed to do the Final enumeration in that block yourself.

13. Enumeration of Special Places.

13.1 Enumeration of Hospitals.—In the case of Hospitals, the enumeration during the Preliminary Census, 1st-10th March, should be carried out only in respect of the quarters occupied by the doctors, nurses and any other permanent residents in the hospital premises. No preliminary census should be carried out in the wards or rooms meant for patients during the period. The census schedules should be collected back as usual after the Preliminary Census and then re-issued to the Hospital authorities on the morning of the 15th. The Hospital authorities should be requested to enumerate all the patients in the Hospital during the period 11th to 16th March and thereafter do a final check on the night of the Final Census, 17th March on all the patients, doctors, nurses and any other permanent residents. Births or deaths which occur in wards or rooms after the enumerator's visit on the Final Census night should not be taken into account.

13.2 Fishermen out at sea on final Census Night.—In the coastal areas where there are fishermen, enumerators should be instructed not to cross out the names of those fishermen who have gone out to the sea on the final census night.

in a Census Block it would have been listed as non-housing unit (the Station Master's bungalow or other quarters would of course, have been listed separately as a housing unit). Every Enumerator in whose block a Railway Station falls should please check up with the Station Master whether Special Railway Enumerators are being appointed for the station. If such special Railway Enumerators are being appointed the enumerator of the Census Block need not enumerate persons inside the Railway Station (i.e., on the platform, in waiting rooms etc.) on the Final Census night. If Special Railway Enumerators are not being appointed he should visit the Railway Station and enumerate persons inside Railway Station (such stations will usually be very small stations). He must however visit the housing units such a Station Master's bungalow, and other bungalows the occupants of which he would have been enumerated at the Preliminary Census and carry out the Final Census as in the case of other housing units.

13.4 Outdoor Enumerators appointed to Railway Stations.—

Except in the case of very small stations, special arrangements will be made with the railway authorities for the enumeration of passengers and railway staff on duty within railway station premises to which the general public will not normally have access without a railway ticket. If Outdoor Enumerators have been appointed to railway stations please enquire from the Station Master whether Special Railway Enumerators have been appointed for such stations. If so the outdoor enumerator may be requested to confine his attention to the streets out-side the station and enumerate persons found there, who have no passes.

14. Enumeration Passes :

14.1 Enumeration Passes.—The number of passes given to each Enumerator should in most cases be adequate. However if an enumerator finds that he runs short of passes he may write out a pass as in the specimen given below and issue it under his signature :—

CENSUS

Bearer has been enumerated
by me.

.....,
Enumerator.

An outdoor enumerator will have to issue a pass to each person enumerated by him. The Outdoor Enumerator too, may if he runs short of passes, write out an issue passes as above.

14.2 Persons in Possession of Enumeration Passes at the time an enumerator visit their home.—If any person is found to possess an enumeration pass at the time of the Enumerator's visit, it indicates that such person has already been enumerated that night. The Enumerator should therefore treat that person as not present in the housing unit and crossout his name and particulars on the population schedule as he has already been enumerated elsewhere.

15. Action on the Final Census Night.—On the night of the Final Census, please make it a point to be out, inspecting the work of the enumerators as much as possible. Please take with you a stock of Census Schedules and Enumeration Passes and enumerate any person whom you find outdoors and who has not been enumerated earlier that night. They should be issued Enumeration Passes after enumeration.

After 9.30 p.m., please visit some of the places below within your circle and satisfy yourself that they have been visited by your enumerators :—

- (a) Temples, Churches, Mosques, etc.
- (b) Places where there are night workmen, e.g. mills, markets.
- (c) Places where there are night watchers, e.g. stores, offices.
- (d) Clubs, public parks and ambalams.
- (e) Places that might serve as sleeping places for persons without any fixed abode.

Please write the words "OUT-DOOR ENUMERATION" in block letters on the top right-hand corner of each schedule used by you.

You should take care that you yourself are enumerated on the Final Census night. This should be done by entering the particulars about yourself on your "OUT-DOOR ENUMERATION" schedules before you commence work on that night.

16. Outdoor Enumerators — Stopping of Vehicles.—It is desirable, wherever possible, to stop vehicles, at important road junctions and enumerate the persons therein. The assistance of the Police should be obtained whenever it is proposed to stop vehicles as enumerators have no legal power to do so. The I.G.P. is being requested to instruct Police Officers to render suitable assistance.

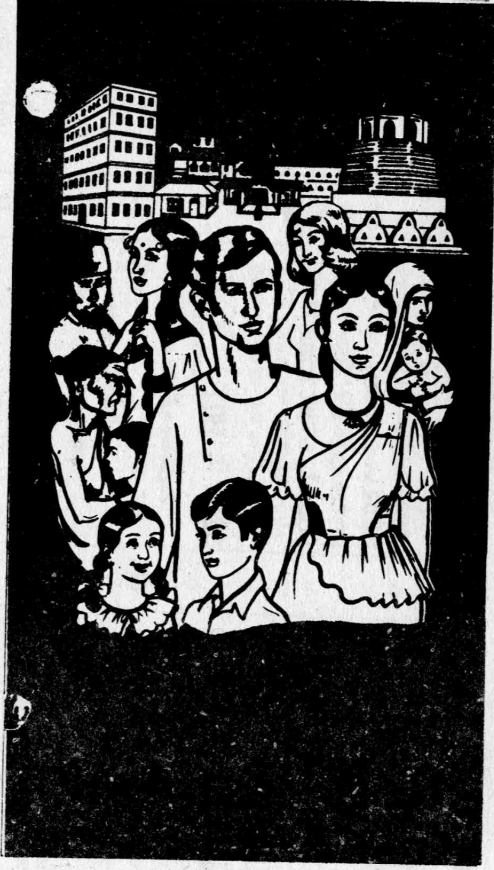
17. Action after the Final Census.—On the morning after the Final Census you should be at your head-quarters as early as possible to receive the completed schedules from the enumerators. As each enumerator returns his schedules, please take the following action:—

- (a) Go through all the entries made on the Final Census night and make sure that they are in order.
- (b) Check that all the persons entered on the schedules have been serially numbered and that there are no mistakes or omissions in the serial numbering.
- (c) That the entries on the cover of the Enumeration Books have been correctly made.
- (d) That the enumerator's abstract on Form F 13 E has been correctly prepared and submitted.

18. Notification of Final Results.—Please note the total population in each of your Census Blocks on the Final Census night. (This will be the last serial number in cage 2 in respect of the schedules for each Census Block.) Please add up these figures together with the figures on the schedules used by your outdoor enumerators and yourself on the Final Census night. This will give the total population of your Census Circle. Please report this figure to your Assistant Commissioner on form F 16,

"Final Census Results". This form should be handed over to your Assistant Commissioner as early as possible on the day after the Final Census.

19. Despatch of Completed Census Schedules to Assistant Commissioner.—The Enumerator's Abstracts prepared by your enumerators (including outdoor enumerators) should be arranged in order and sent separately to your Assistant Commissioner for despatch to the Census Office in Colombo. The books of completed schedules returned by your enumerators should be despatched to your Assistant Commissioner as early as possible along with any unused schedules. Please keep a record of the books of schedules despatched, and see that you receive an acknowledgment for them.



உயர்ப்புறத்திலிருந்து இடது கையிலிருந்து வலது வரையில்
 தபால் பகுதி முத்திரைப் பணியகத்தின் வெளியீடு
 Issued by the Philatelic Bureau - Department of Posts -
 SRI LANKA.

COMPUTER FACILITIES MADE AVAILABLE BY
THE UNFPA FOR THE PROCESSING OF CENSUS DATA

System 4331

Central Processing Unit	4331 - 101	1 Mega byte of main memory Diskette I/O
Disk drives	2310 - A02	129 mega byte
	2310 - B02	128 mega byte
Tape drives	two sets of 8809 A02/002	1,600 bpi, 9-track
Line Printer	3203 - 005	1,200 Lines per minute
Line Printer	3262 - 001	650 lines per minute
Card reader	3505 - B01	800 cards per minute
Display terminals	eight sets of 3278 - 002	
Typewriter Keyboards	two sets of 3278 - 002	
System console	3278 - A02	

System 34

System unit	5340 - E23	128 kilo Bytes of main memory
Display stations	two sets of 5251, seven sets of 5252 (dual stations)	
Line Printer	3262 - B01	650 lines per minute

ජන හා නිවාස සංගණනය, ශ්‍රී ලංකාව - 1981 ඉංග්‍රීසි, සිංහල සහ දෙමළ භාෂාවන්හි - 1981 CENSUS OF POPULATION AND HOUSING, SRI LANKA - 1981										
උපන් අවුරුද්දේ මුල් අංක තුන பிறந்த வருடத்தின் முதல் மூன்று தானங்கள் FIRST THREE DIGITS OF THE YEAR OF BIRTH	වයස් තීර්ථායක වගුව (1981 සංගණන දිනයට) வயது கணிக்கும் அட்டவணை AGE DETERMINATION TABLE (தொகைமதிப்புத் தினத்தன்று) (As At Census Date 1981)									
	උපන් අවුරුද්දේ අවසාන අංකය பிறந்த வருடத்தின் கடைசித் தானம் LAST DIGIT OF THE YEAR OF BIRTH									
	0	1	2	3	4	5	6	7	8	9
187—	111/110	110/109	109/108	108/107	107/106	106/105	105/104	104/103	103/102	102/101
188—	101/100	100/99	99/98	98/97	97/96	96/95	95/94	94/93	93/92	92/91
189—	91/90	90/89	89/88	88/87	87/86	86/85	85/84	84/83	83/82	82/81
190—	81/80	80/79	79/78	78/77	77/76	76/75	75/74	74/73	73/72	72/71
191—	71/70	70/69	69/68	68/67	67/66	66/65	65/64	64/63	63/62	62/61
192—	61/60	60/59	59/58	58/57	57/56	56/55	55/54	54/53	53/52	52/51
193—	51/50	50/49	49/48	48/47	47/46	46/45	45/44	44/43	43/42	42/41
194—	41/40	40/39	39/38	38/37	37/36	36/35	35/34	34/33	33/32	32/31
195—	31/30	30/29	29/28	28/27	27/26	26/25	25/24	24/23	23/22	22/21
196—	21/20	20/19	19/18	18/17	17/16	16/15	15/14	14/13	13/12	12/11
197—	11/10	10/09	09/08	08/07	07/06	06/05	05/04	04/03	03/02	02/01
198—	01/00	00/—	—	—	—	—	—	—	—	—

ගණන් ගන්නා නිලධාරියාගේ නම
 கணக்கெடுப்பாளரின் பெயர்
 Enumerator's Name

දිස්ත්‍රික්ක සඳහා කේත மாவட்டங்களின் குறியீடுகள் CODES FOR DISTRICTS				රටවල් සඳහා කේත நாடுகளின் குறியீடுகள் CODES FOR COUNTRIES	
දිස්ත්‍රික්කය மாவட்டம் District	කේතය குறியீடு Code	දිස්ත්‍රික්කය மாவட்டம் District	කේතය குறியீடு Code	රට நாடு Country	කේතය குறியீடு Code
කොළඹ/කොළඹපු/Colombo	01	මාතලේ/මාතලේපු/Batticaloa	14	ශ්‍රී ලංකාව/இலங்கை/Sri Lanka	31
ගම්පහ/கம்பஹா/Gampaha	02	අම්පාර/அம்பாறை/Amparai	15	ඉන්දියාව/இந்தியா/India	32
කළුතර/கலுதரை/Kalutara	03	ත්‍රිකුණාමලය/தருகோணமலை/		ඕස්ට්‍රේලියාව/அவுஸ்திரேலியா/Australia	33
කන්දුවර/கண்டி/Kandy	04	ත්‍රිකුණාමලය/தருகோணமலை/		චීනය/சீனா/China	34
මාතලේ/மாதலை/Matale	05	කුරුණෑගල/குருநாகல்/Kurunegala	16	මහා බ්‍රිතාන්‍යය/பெரியபிரித்தானியா/Great Britain	35
නුවරඑළිය/நுவரேலியா/Nuwara		පුත්තලම/புத்தளம்/Puttalam	17	ජපානය/ਜਪான்/Japan	36
Eliya	06	අනුරාධපුරය/அனுராதபுரம்/	18	මලේසියාව/மலேசியா/Malaysia	37
ගාල්ල/காலி/Galle	07	අනුරාධපුරය/அனுராதபுரம்/	19	පකිස්තානය/پاکستان/Pakistan	38
මාතර/மாதரை/Matara	08	අනුරාධපුරය/அனுராதபுரம்/		සිංගප්පූරුව/சிங்கப்பூர்/Singapore	39
හම්බන්තොට/அம்பாந்தோட்டை/Hambantota	09	අනුරාධපුරය/அனுராதபுரம்/		අ.ම.එ.ක. රට/அ.ம.எ.க. நாடுகள்/U.S.A.	40
යාපනය/யாழ்ப்பாணம்/Jaffna	10	අනුරාධපුරය/அனுராதபுரம்/		බ.ජ.ර.ම. රට/ப.ச.ர.ம. நாடு/W.Germany	41
මන්නාරම/மன்னார்/Mannar	11	අනුරාධපුරය/அனுராதபுரம்/		න.ජ.ර.ම. රට/ச.தே.ம.எ. நாடு/E.Germany	42
වවුනියාව/வவுனியா/Vavuniya	12	අනුරාධපුරය/அனுராதபுரம்/		ප්‍රංශය/பிரான்ஸ்/France	43
මුලතිව්/முல்லைத்தீவு/Mullaitivu	13	අනුරාධපුරය/அனுராதபுரம்/		ඉතාලිය/இத்தாலி/Italy	44
		අනුරාධපුරය/அனுராதபுரம்/		ස්වීඩනය/சுவிடன்/Sweden	45
		අනුරාධපුරය/அனுராதபுரம்/		නෝර්වේ/நோர்வே/Norway	46
		අනුරාධපුරය/அனுராதபுரம்/		දේන්මාර්කය/டென்மார்க்/Denmark	47
		අනුරාධපුරය/அனுராதபுரம்/		ස්විට්සර්ලන්තය/சுவිற்சர்லாந்து/Switzerland	48
		අනුරාධපුරය/அனுராதபுரம்/		යෝ.එ.එ. රට/உ.எ.எ.எ. நாடு/U.S.S.R.	49
		අනුරාධපුරය/அனுராதபுரம்/		වෙනත් රටක/வேறுநாடு/any other Country	90
		අනුරාධපුරය/அனுராதபுரம்/		නොදන්නා/தெரியாது/Not Known	98

50716-85,000 (80/07) ශ්‍රී ලංකා රජයේ මුද්‍රණ දෙපාර්තමේන්තුව

APPENDIX IISTANDARD OCCUPATIONAL CLASSIFICATION FOR SRI LANKA 1981

(Based on the ILO 1968 revision and prepared for use in the 1981 Population
- Census Tabulations)

MAJOR, MINOR AND UNIT GROUPSMAJOR GROUP 0/1 : PROFESSIONAL, TECHNICAL AND RELATED WORKERS.0-1 Physical Scientists and Related Technicians.

- 011 Chemists
- 012 Physicists
- 013 Physical Scientists not elsewhere classified
- 014 Physical Science Technicians.

0-2/0-3 Architects, Engineers and Related Technicians.

- 021 Architects and Town Planners.
- 022 Civil Engineers.
- 023 Electrical and Electronics Engineers.
- 024 Mechanical Engineers.
- 025 Chemical Engineers.
- 026 Metallurgists.
- 027 Mining Engineers.
- 028 Industrial Engineers.
- 029 Engineers not Elsewhere Classified.
- 031 Surveyors.
- 032 Draughtsmen.
- 033 Civil Engineering Technicians.
- 034 Electrical and Electronics Engineering Technicians.
- 035 Mechanical Engineering Technicians.
- 036 Chemical Engineering Technicians.
- 037 Metallurgical Technicians.
- 038 Mining Technicians.
- 039 Engineering Technicians not Elsewhere Classified.

0-4 Aircraft and Ships' Officers

- 041 Aircraft Pilots, Navigators and Flight Engineers.
- 042 Ships' Deck Officers and Pilots.
- 043 Ships' Engineers.

0-5 Life Scientists and Related Technicians

- 051 Biologists, Zoologists and Related Scientists.
- 052 Bacteriologists, Pharmacologists and Related Scientists.
- 053 Agronomists and Related Scientists.
- 054 Agricultural Technicians-Research.
- 055 Agricultural Technicians-Extension.
- 059 Other Life Science Technicians.

0-6/0-7 Medical, Dental, Veterinary and Related Workers.

- 061 Medical Doctors.
- 062 Medical Assistants.
- 063 Dentists.
- 064 Dental Assistants.
- 065 Ayurvedic Physicians.
- 066 Veterinarians.
- 067 Veterinary Assistants.
- 068 Pharmacists.
- 069 Pharmaceutical Assistants.
- 070 Dietitians and Public Health Nutritionists.
- 071 Professional Nurses.
- 072 Nursing Personnel not Elsewhere Classified.

	073	Professional Midwives.
	074	Midwifery Personnel not Elsewhere Classified.
	075	Optometrists and Opticians.
	076	Physiotherapists and Occupational Therapists.
	077	Medical X-ray Technicians.
	078	Homeopathy, Acupuncture and related Medical Servants.
	079	Medical, Dental, Veterinary and related Workers n.e.c.
0-8		<u>Statisticians, Mathematicians, Systems Analysts and Related Technicians.</u>
	081	Statisticians.
	082	Mathematicians and Actuaries.
	083	Systems Analysts/Programmers.
	084	Statistical and Mathematical Technicians.
0-9		<u>Economists</u>
	090	Economists.
1-1		<u>Accountants</u>
	111	Accounts - Chartered.
	112	Accountants - Cost and Works.
	113	Accountants - Other.
	114	Auditors.
1-2		<u>Jurists</u>
	121	Proctors, Attorneys at Law.
	122	Judges.
	129	Jurists not Elsewhere Classified.
1-3		<u>Teachers</u>
	131	University and Higher Education Teachers.
	132	School Teachers.
	133	Pro-primary Education Teachers.
	134	Special Education Teachers.
	135	Principals & Head Teachers.
	136	School Inspectors.
	139	Teachers not Elsewhere Classified.
1-4		<u>Workers in Religion</u>
	141	Buddhist Monks/Priests and Nuns.
	142	Other Buddhists Religious Workers.
	143	Hindu Priests.
	144	Other Hindu Religious Workers.
	145	Muslim Priests.
	146	Other Muslim Religious Workers.
	147	Christian Priests.
	148	Other Christian Religious Workers.
	149	Workers in Religion, not Elsewhere Classified.
1-5		<u>Authors, Journalists and Related Writers</u>
	151	Authors and Critics.
	152	Editors and Journalists.
	153	Reporters.
	159	Other Related Writers n.e.c.
1-6		<u>Sculptors, Painters, Photographers & Related Creative Artists.</u>
	161	Sculptors, Painters and Related Artists.
	162	Commercial Artists and Designers.
	163	Photographers and Cameramen.
	169	Sculptors, Painters and Photographers n.e.c.
1-7		<u>Composers and Performing Artists.</u>
	171	Composers, Musicians and Singers.
	172	Choreographers and Dancers.

- 173 Actors and Stage Directors.
- 174 Producers, Performing Artists.
- 175 Circus Performers.
- 176 Elephant and Other Animal Trainers.
- 179 Performing Artists not Elsewhere Classified.
- 1-8 Athletes, Sportsmen and Related Workers.
 - 181 Athletic Coaches and Physical Trainers.
 - 189 Athletes, Sportsmen and Other Related Workers n.e.c.
- 1-9 Professional, Technical and Related Workers, not Elsewhere Classified.
 - 191 Librarians, Archivists and Curators.
 - 192 Sociologists, Anthropologists and Related Scientists.
 - 193 Social Workers.
 - 194 Personnel and Occupational Specialists.
 - 195 Philologists, Translators and Interpreters.
 - 196 Astrologers, Oia Leaf Scribes and Palmists.
 - 199 Other Professional, Technical and Related Workers.

MAJOR GROUP 2 : ADMINISTRATIVE AND MANAGERIAL WORKERS

- 2-0 Legislative Officials and Government Administrators
 - 201 Legislative Officials.
 - 202 Government Administrators.
- 2-1 Managers.
 - 211 General Managers.
 - 212 Production Managers (Except Farm)
 - 213 Managers-Banking, Insurance, Finance etc.
 - 219 Managers not Elsewhere Classified.

MAJOR GROUP 3 : CLERICAL AND RELATED WORKERS.

- 3-0 Clerical Supervisors
 - 300 Clerical Supervisors.
- 3-1 Government Supervisory and Field Officers Except Technical Officers and Clerical Supervisors.
 - 310 Government Supervisory and Field Officers Except Technical Officers and Clerical Supervisors.
- 3-2 Stenographers, Typists and Card-and Tape-punching Machine Operators
 - 321 Stenographers, Typists and Teletypists.
 - 322 Card-and Tape-punching Machine Operators.
- 3-3 Book-Keepers, Cashiers and Related Workers.
 - 331 Book-Keepers and Cashiers.
 - 339 Book-Keepers, Cashiers and Related Workers not Elsewhere Classified.
- 3-4 Computing Machine Operator
 - 341 Book-Keeping and Calculating Machine Operators.
 - 342 Automatic Data Processing Machine Operators.
- 3-5 Transport and Communication Supervisors
 - 351 Railway Station Masters
 - 352 Post Masters.
 - 359 Transport and Communication Supervisors not Elsewhere Classified.
- 3-6 Transport Conductors
 - 361 Railway Train Guards.
 - 362 Bus conductors.
 - 369 Other Transport Conductors and Related Workers n.e.c.

3-7 Mail Distribution Workers.

- 371 Postmen and Telegraph Messengers.
- 372 Mail Sorters.
- 373 Peons.
- 374 Messengers n.e.c.
- 379 Other Related Workers n.e.c.

3-8 Telephone and Telegraph Operators.

- 380 Telephone and Telegraph Operators.

3-9 Clerical and Related Workers not Elsewhere Classified.

- 391 Central Government Clerks.
- 392 Local Government Clerks.
- 393 Government Corporation Clerks.
- 394 Mercantile and Private Sector Clerks.
- 395 Receptionists.
- 396 Proof Readers.
- 399 Other Clerical and Related Workers n.e.c.

MAJOR GROUP 4 : SALES WORKERS

4-0 Managers (Wholesale and Retail Trade)

- 401 Managers, Wholesale Trade.
- 402 Managers, Retail Trade.

4-1 Working Proprietors (Wholesale and Retail Trade)

- 411 Working Proprietor, Wholesale Trade.
- 412 Working Proprietors, Retail Trade.

4-2 Sales Supervisors and Buyers.

- 421 Sales Supervisors.
- 422 Buyers.

4-3 Technical Salesmen, Commercial Travellers and Manufacturers' Agents.

- 431 Technical Salesmen and Service Advisers.
- 432 Commercial Travellers and Manufacturers' Agents.

4-4 Insurance, Real Estate, Securities and Business Services Salesmen and Auctioneers.

- 441 Insurance, Real Estate and Securities Salesmen.
- 443 Appraiser, Assessors.
- 444 Brokers.

4-5 Salesmen, Shop Assistants and Related Workers.

- 451 Salesmen, Shop Assistants and Demonstrators.
- 452 Canvassers.
- 453 Street Vendors and Hawkers.
- 454 Street Newspaper Sellers.
- 455 Petrol Filling Station Attendants.

4-9 Sales Workers not Elsewhere Classified

- 490 Sales Workers n.e.c.

MAJOR GROUP 5 : SERVICE WORKERS.

5-0 Managers (Catering and Lodging Services)

- 500 Managers (Catering and Lodging Services)

5-1 Working Proprietors (Catering and Lodging Services)

- 510 Working Proprietors (Catering and Lodging Services)

5-2 Housekeeping and Related Services Supervisors.

- 520 Housekeeping and Related Service Supervisors.

- 5-3 Cooks, Waiters, Bartenders and Related Workers
- 531 Cooks (Institution).
 - 532 Cooks (Domestic Service)
 - 533 Waitors and Room Boys.
 - 534 Barkeepers.
 - 535 Cafe & Hotel Tea Makers.
- 5-4 Maids and Related Housekeeping Service Workers not Elsewhere Classified
- 541 Ayahs and Maids.
 - 542 Male Domestic Servant (Except Cooks).
 - 549 Maids and Related Housekeeping Service Workers n.e.c.
- 5-5 Building Caretakers, Charworkers, Cleaners and Related Workers.
- 551 Building Caretakers.
 - 552 Charworkers, Cleaners and Related Workers.
- 5-6 Launderers, Dry-Cleaners and Pressers.
- 561 Launderers, Dry-Cleaners and Pressers.
 - 562 Dhobies.
- 5-7 Hairdressers, Barbers, Beauticians and Related Workers.
- 571 Barbers and Hairdressers.
 - 572 Beauticians.
 - 573 Tatooers.
 - 579 Other Related Workers n.e.c.
- 5-8 Protective Service Workers.
- 581 Fire-Fighters.
 - 582 Policemen and Detectives.
 - 583 Prison Guards and Jailors.
 - 584 Excise Officers and Guards.
 - 585 Watchers.
 - 586 Game Wardens, etc.
 - 587 Customs Guards, Tide Waiters etc.
 - 589 Protective Service Workers not Elsewhere Classified.
- 5-9 Service Workers, not Elsewhere Classified.
- 591 Guides.
 - 592 Undertakers and Embalmers.
 - 593 Marriage Brokers.
 - 599 Other Service Workers.

MAJOR GROUP 6 : AGRICULTURAL, ANIMAL HUSBANDRY AND FORESTRY WORKERS, FISHERMEN AND HUNTERS.

- 6-0 Farm Managers, Estate Superintendents and Supervicers
- 600 Farm Managers (Agricultural).
 - 601 Tea Estate Superintendents.
 - 602 Rubber Estate Superintendents.
 - 603 Coconut Estate Superintendents.
 - 604 Superintendents, Other Estates.
 - 605 Other Supervisory Staff - Tea Estates.
 - 606 Other Supervisory Staff - Rubber Estates.
 - 607 Other Supervisory Staff - Coconut Estates.
 - 608 Other Supervisory Staff - Other Agricultural.
- 6-1 Cultivators and Farmers.
- 611 Cultivators of Paddy.
 - 612 Cultivators of Vegetables.
 - 613 Cultivators of Other Food Crops.
 - 614 Cultivators of Coconut.
 - 615 Cultivators of Tea.

- 5-3 Cooks, Waiters, Bartenders and Related Workers
- 531 Cooks (Institution).
 - 532 Cooks (Domestic Service)
 - 533 Waitors and Room Boys.
 - 534 Barkeepers.
 - 535 Cafe & Hotel Tea Makers.
- 5-4 Maids and Related Housekeeping Service Workers not Elsewhere Classified
- 541 Ayahs and Maids.
 - 542 Male Domestic Servant (Except Cooks).
 - 549 Maids and Related Housekeeping Service Workers n.e.c.
- 5-5 Building Caretakers, Charworkers, Cleaners and Related Workers.
- 551 Building Caretakers.
 - 552 Charworkers, Cleaners and Related Workers.
- 5-6 Launderers, Dry-Cleaners and Pressers.
- 561 Launderers, Dry-Cleaners and Pressers.
 - 562 Dhobies.
- 5-7 Hairdressers, Barbers, Beauticians and Related Workers.
- 571 Barbers and Hairdressers.
 - 572 Beauticians.
 - 573 Tatooers.
 - 579 Other Related Workers n.e.c.
- 5-8 Protective Service Workers.
- 581 Fire-Fighters.
 - 582 Policemen and Detectives.
 - 583 Prison Guards and Jailors.
 - 584 Excise Officers and Guards.
 - 585 Watchers.
 - 586 Game Wardens, etc.
 - 587 Customs Guards, Tide Waiters etc.
 - 589 Protective Service Workers not Elsewhere Classified.
- 5-9 Service Workers, not Elsewhere Classified.
- 591 Guides.
 - 592 Undertakers and Embalmers.
 - 593 Marriage Brokers.
 - 599 Other Service Workers.

MAJOR GROUP 6 : AGRICULTURAL, ANIMAL HUSBANDRY AND FORESTRY WORKERS, FISHERMEN AND HUNTERS.

- 6-0 Farm Managers, Estate Superintendents and Supervicers
- 600 Farm Managers (Agricultural).
 - 601 Tea Estate Superintendents.
 - 602 Rubber Estate Superintendents.
 - 603 Coconut Estate Superintendents.
 - 604 Superintendents, Other Estates.
 - 605 Other Supervisory Staff - Tea Estates.
 - 606 Other Supervisory Staff - Rubber Estates.
 - 607 Other Supervisory Staff - Coconut Estates.
 - 608 Other Supervisory Staff - Other Agricultural.
- 6-1 Cultivators and Farmers.
- 611 Cultivators of Paddy.
 - 612 Cultivators of Vegetables.
 - 613 Cultivators of Other Food Crops.
 - 614 Cultivators of Coconut.
 - 615 Cultivators of Tea.

- 616 Cultivators of Rubber.
- 617 Cultivators of Minor Export Crops.
- 618 Cultivators of Other or Mixed Crops.
- 6-2 Livestock Farmers.
 - 620 Cattle and Buffalo Farmers.
 - 621 Sheep and Goat Farmers.
 - 622 Poultry Farmers..
 - 629 Other Animal Husbandry Farmers.
- 6-3 Agriculture & Animal Husbandry Workers.
 - 630 Rubber Tappers and Rubber Estate Labourers.
 - 631 Tea Pluckers and Tea Estate Labourers.
 - 632 Coconut Estate Labourers.
 - 633 Toddy Tappers.
 - 634 Livestock, Dairy or Poultry Farm Workers.
 - 635 Nursery Workers and Gardeners.
 - 636 Other Agricultural Labourers.
 - 637 Farm Machinery Operators.
 - 639 Agricultural and Animal Husbandry Workers n.e.c.
- 6-4 Fishermen & Related Workers.
 - 641 Fishermen.
 - 642 Pearl Fishery Divers.
 - 643 Chank Fishers.
 - 649 Other Related Workers.
- 6-5 Hunters and Related Workers
 - 651 Elephant Catchers.
 - 652 Hunters and Related Workers n.e.c.
- 6-6 Forestry Workers.
 - 661 Forest Rangers, Forest Guards and Similar Workers.
 - 662 Wood Cutters.
 - 663 Forestry Labourers.
 - 669 Forestry Workers n.e.c.

MAJOR GROUP 7/8/9 : PRODUCTION AND RELATED WORKERS, TRANSPORT EQUIPMENT OPERATORS AND LABOURERS.

- 7-0 Production Supervisors and General Foremen.
 - 700 Production Supervisors and General Foremen.
- 7-1 Miners, Quarrymen, Well Drillers and Related Workers.
 - 711 Plumbago Mine Workers.
 - 712 Gem Diggers.
 - 713 Other Mine Workers.
 - 714 Quarry Workers.
 - 715 Mineral and Stone Treathers.
 - 716 Well Drillers, Borers and Related Workers.
 - 719 Other Related Workers n.e.c.
- 7-2 Metal Processers.
 - 721 Metal Smelting, Converting and Refining Furnacemen.
 - 722 Metal Rolling Mill Workers.
 - 723 Metal Melters and Reheaters.
 - 724 Metal Casters.
 - 725 Metal Moulders and Coremakers.
 - 726 Metal Annealers, Temperers and Case-Hardeners.
 - 727 Metal Drawers and Extrudors.
 - 728 Metal Platers and Coaters.
 - 729 Metal Processers not Elsewhere Classified.

- 7-3 Wood Preparation Workers and Paper Makers.
- 731 Wood Treaters.
 - 732 Sawyers, Plywood Makers, and Related Wood-Processing Workers.
 - 733 Paper Pulp Preparers.
 - 734 Paper Makers.
- 7-4 Chemical Processers and Related Workers.
- 741 Crushers, Grinders and Mixers.
 - 742 Cookers, Roasters and Related Heat-Treaters.
 - 743 Filter and Separator Operators.
 - 744 Still and Reactor Operators.
 - 745 Petroleum-Refining Workers.
 - 746 Rubber Processing Workers.
 - 749 Chemical Processers and Related Workers not Elsewhere Classified.
- 7-5 Spinners, Weavers, Knitters, Dyers and Related Workers.
- 751 Fibre Preparers.
 - 752 Spinners and Winders.
 - 753 Weaving and Knitting-Machine Setters and Pattern-Card Preparers.
 - 754 Weavers and Related Workers.
 - 755 Knitters.
 - 756 Bleachers, Dyers and Textile Produced Finishers.
 - 759 Spinners, Weavers, Knitters, Dyers and Related Workers n.e.c.
- 7-6 Tanners, Fellmongers and Pelt Dressers.
- 761 Tanners and Fellmongers
 - 762 Pelt Dressers
- 7-7 Food and Beverage Processers.
- 771 Grain Millers and Related Workers.
 - 772 Sugar Processers and Refiners.
 - 773 Butchers and Meat Prepares.
 - 774 Food Preservers.
 - 775 Dairy Product Processers.
 - 776 Bakers, Pastrycooks and Confectionery Makers.
 - 777 Tea, Coffee and Cocoa Preparers.
 - 778 Brewers Wine and Beverage Makers.
 - 779 Food and Beverage Processers n.e.c.
- 7-8 Tobacco Preparers and Tobacco Product Makers.
- 781 Tobacco Preparers.
 - 782 Cigar Makers.
 - 783 Cigarette Makers.
 - 784 Snuff Makers.
 - 785 Beedi Makers.
 - 789 Tobacco Preparers and Tobacco Product Makers n.e.c.
- 7-9 Tailors, Dressmakers, Sewers, Upholsters and Related Workers.
- 791 Tailors and Dressmakers.
 - 792 Milliners and Hatmakers.
 - 793 Patternmakers and Cutters.
 - 794 Sewers and Embroiderers.
 - 795 Upholsterers and Related Workers.
 - 799 Tailors, Dressmakers, Sewers, Upholsterers and Related Workers n.e.c.
- 8-0 Shoemakers and Leather Goods Makers.
- 801 Shoemakers and Shoe Repairers.
 - 802 Shoe Cutters, Lasters, Sewers and Related Workers.
 - 803 Leather Goods Makers.

- 8-1 Cabinet Makers, Furniture Makers and Related Woodmakers.
- 811 Cabinet Makers and Furniture Makers.
 - 812 Woodworking Machine Operators.
 - 819 Cabinet Makers and Related Woodworkers n.e.c.
- 8-2 Stone Cutters and Carvers.
- 820 Stone Cutters and Carvers.
- 8-3 Blacksmiths, Tool Makers and Machine Tool Operators.
- 831 Blacksmiths, Hammersmiths and Forging - Press Operators.
 - 832 Toolmakers, Metal Pattern Makers and Metal Makers.
 - 833 Machine - Tool Setter-Operators.
 - 834 Machine Tool Operators.
 - 835 Metal Grinders, Polishers and Tool Sharpeners.
 - 839 Blacksmiths, Toolmakers and Machine Tool Operators n.e.c.
- 8-4 Machinery Fitters, Machine Assemblers and Precision Instrument Makers. (Except Electrical)
- 841 Machinery Fitters and Machine Assemblers.
 - 842 Watch Clock and Precision Instrument Makers.
 - 843 Motor Vehicle Mechanics.
 - 844 Aircraft Engine Mechanics.
 - 849 Machinery Fitters, Machine Assemblers and Precision Instrument Makers (Except Electrical) n.e.c.
- 8-5 Electrical Fitters and Related Electrical and Electronic Workers.
- 851 Electrical Fitters.
 - 852 Electronics Fitters.
 - 853 Electrical and Electronic Equipment Assemblers.
 - 854 Radio and Television Repairmen.
 - 855 Electrical Wiremen.
 - 856 Telephone and Telegraph Installers.
 - 857 Electric Linemen and Cable Jointers.
 - 859 Electrical Fitters and Related Electrical and Electronics Workers n.e.c.
- 8-6 Broadcasting Station and Sound Equipment Operators and Cinema Projectionists.
- 861 Broadcasting Station Operators.
 - 862 Sound Equipment Operators and Cinema Projectionists.
- 8-7 Plumbers, Welders, Sheet Metal and Structural Metal Preparers and Erectors.
- 871 Plumbers and Pipe Fitters.
 - 872 Welders and Flame-Cutters.
 - 873 Sheet-Metal Workers.
 - 874 Structural Metal Preparers and Erectors.
- 8-8 Jewellery and Precious Metal Workers.
- 881 Jewellery Makers, Goldsmiths and Silversmiths.
 - 882 Gem Cutters and Polishers.
 - 883 Gilders.
- 8-9 Glass-Formers, Brick and Tile Makers, Potters and Related Workers.
- 891 Glass-Formers, Cutters, Grinders and Finishers.
 - 892 Potters and Related Clay and Abrasive Formers.
 - 893 Glass and Ceramics Kilnmen.
 - 894 Glass Engravers and Etchers.
 - 895 Glass and Ceramics Painters and Decorators.
 - 896 Tile Makers and Related Workers.
 - 897 Brick Makers, Kilnmen and Related Workers.
 - 899 Glass Formers, Potters and Related Workers n.e.c.

- 9-0 Rubber and Plastics Products Makers.
- 901 Rubber and Plastics Product Makers (Except Tyre Makers and Tyre Vulcanisers).
- 902 Tyre Makers and Vulcanisers.
- 9-1 Paper and Paperboard Products Makers.
- 910 Paper and Paperboard Products Makers.
- 9-2 Printers and Related Workers.
- 921 Compositers and Typesetters.
- 922 Printing Pressmen.
- 923 Stereotypers and Electrotypers.
- 924 Printing Engravers (Except Photo Engravers).
- 925 Photo-Engravers.
- 926 Bookbinders and Related Workers.
- 927 Photographic Darkroom Workers.
- 929 Printers and Related Workers n.e.c.
- 9-3 Painters.
- 931 Painters, Construction.
- 939 Painters n.e.c.
- 9-4 Production and Related Workers n.e.c.
- 941 Musical Instrument Makers and Tuners.
- 942 Basketry Weavers.
- 943 Coir Weavers and Mat Weavers.
- 944 Brush and Broom Makers.
- 945 Coir Rope Makers.
- 946 Non-Metallic Mineral Product Makers.
- 949 Other Production and Related Workers.
- 9-5 Bricklayers, Carpenters and Other Construction Workers.
- 951 Bricklayers, Stonemasons and Tile Setters.
- 952 Reinforced - Concreters.
- 953 Roofers.
- 954 Carpenters, Joiners, and Parquetry Workers.
- 955 Plasterers.
- 956 Insulators.
- 957 Glaziers.
- 958 Ship Carpenters and Boat Builders.
- 959 Construction Workers n.e.c.
- 9-6 Stationary Engine and Related Equipment Operators.
- 961 Power-Generating Machinery Operators:
- 969 Stationary Engine and Related Equipment Operators n.e.c.
- 9-7 Material - Handling and Related Equipment Operators, Dockers, Freight Handlers.
- 971 Dockers and Freight Handlers.
- 972 Riggers and Cable Splicers.
- 973 Crane and Hoist Operators.
- 974 Earth-Moving and Related Machinery Operators.
- 975 Packers and Labellers and Related Workers.
- 979 Material-Handling Equipment Operators n.e.c.

STANDARD INDUSTRIAL CLASSIFICATION OF ALL ECONOMIC ACTIVITIES FOR SRI LANKA-1981

(Based on the U.N.'s 1968 Revision of the I.S.I.C. and Prepared for the
1981 Population Census Tabulations)

MAJOR DIVISION 0 - AGRICULTURE, HUNTING, FORESTRY AND FISHING

Division	Major Group	Group	Title of Category
01	<u>Agriculture and Fishing</u>		
	011-012		<u>Agricultural and Livestock Production</u>
		0111	Paddy (rice) cultivation.
		0112	Other field grains.
		0113	Vegetable and fruit gardening.
		0114	Tea cultivation.
		0115	Rubber cultivation.
		0116	Coconut cultivation.
		0117	Cinnamon cultivation.
		0118	Cocoa, cardamom and pepper cultivation.
		0119	Tobacco cultivation.
		0120	Citronella cultivation.
		0121	Cultivation of other crops.
		0122	Toddy tapping.
		0123	Livestock production.
	013	0130	Agricultural services.
	014	0140	Hunting, trapping and game propagation.
02	<u>Forestry and Logging</u>		
	021	0210	Forestry.
	022	0220	Logging.
03	<u>Fishing</u>		
	030		<u>Fishing</u>
		0301	Ocean fishing.
		0302	Coastal fishing.
		0303	Chank and pearl fishing.
		0309	Fishing n.e.c.

MAJOR DIVISION 1 - MINING AND QUARRYING

Division	Major Group	Group	Title of Category
11	110	1100	Coal Mining
12	<u>Crude Petroleum and Natural Gas Production</u>		
	120	1200	Crude Petroleum and Natural Gas Production
13	<u>Metal Ore Mining</u>		
	130		<u>Metal Ore Mining</u>
		1301	Iron ore mining.
		1302	Non-ferrous metal ore mining.
19	<u>Other Mining.</u>		
	191	1910	Stone quarrying (including cabook), clay and sand pits.
	192	1920	Plumbago (graphite) mining.
	193	1930	Salt mining and extraction from salterns (salt pans)
	194	1940	Gem mining.
	199	1990	Other mining and quarrying n.e.c.

9-8

Transport Equipment Operators.

- 981 Ship's Deck Ratings, Barge Crews and Boatmen.
- 982 Ships' Engine - Room Ratings.
- 983 Railway Engine Drivers and Firemen.
- 984 Railway Brakemen, Signalmen and Shunters.
- 985 Bus and Lorry Drivers.
- 986 Taxi Drivers.
- 987 Other Motor Vehicle Drivers.
- 988 Animal and Animal Drawn Vehicle Drivers.
- 989 Transport Equipment Operators n.e.c.

9-9

Labourers n.e.c.

- 999 Labourers n.e.c.

MAJOR GROUP 10 : WORKERS NOT CLASSIFIED BY OCCUPATION

- 10-1 Workers Reporting Occupations Unidentifiable or Inadequately
- 10-10 Workers Reporting Occupations Unidentifiable or inadequately described.
- 10-2 Workers not Reporting Any Occupation.
- 10-20 Workers not Reporting Any Occupation.

Armed Forces : Members of the Armed Forces

- Y 00 Members of the Armed Forces.

Division	Major Group	Group	Title of Category
----------	-------------	-------	-------------------

MAJOR DIVISION 2 - MANUFACTURING.

21	<u>Manufacture of Food, Beverages and Tobacco.</u>	
	211-212	<u>Food Manufacturing</u>
	2111	Slaughtering, preparing and preserving meat.
	2112	Manufacture of dairy products.
	2113	Canning and preserving of fruits and vegetable.
	2114	Canning, preserving and processing of fish, crustacea and similar foods.
	2115	Manufacture of vegetable and animal oils and fats including coconut oil.
	2116	Paddy hulling.
	2117	Other grain mill products.
	2118	Manufacture of biscuits.
	2119	Manufacture of other bakery products.
	2120	Sugar factories and refineries.
	2121	Manufacture of cocoa powder from beans.
	2122	Manufacture of cocoa, chocolate and sugar confectionery.
	2123	Manufacture of food products not elsewhere classified.
	2124	Manufacture of prepared animal foods.
	2125	Tea processing (except on tea estates).
	2126	Production of copra from coconut other than on estates.
	2127	Processing of desiccated coconut.
	2128	Manufacture of vinegar, honey and jaggery.
	2129	Manufacture of ice.
	213.	<u>Beverage Industries</u>
	2131	Distilling, rectifying and blending arrack and gin.
	2132	Distilling, rectifying and blending of other spirits.
	2133	Toddy industry.
	2134	Wine industries, and other fermented beverages except toddy.
	2135	Malt liquors and malt.
	2136	Soft drinks and carbonated waters industries.
	214	<u>Tobacco Manufactures</u>
	2141	Manufacture of cigarettes.
	2142	Manufacture of cigars.
	2143	Manufacture of beedies (local cheroots).
	2144	Manufacture of chewing tobacco.
	2149	Tobacco processing n.e.c.
22	<u>Textile, Wearing Apparel and Leather Industries.</u>	
	221	<u>Manufacture of Textiles</u>
	2211	Spinning, weaving and finishing of textiles.
	2212	Manufacture of made-up textile goods except wearing apparel.
	2213	Manufacture of hosiery and knitted wear.
	2214	Other knitting mill industries.
	2215	Manufacture of carpets and rugs.
	2216	Cordage, rope and twine industries.
	2217	Manufacture of coir fibre and other fibres.
	2219	Manufacture of textiles not elsewhere classified.
	222	<u>Manufacture of Wearing Apparel, except Footwear</u>
	223	Manufacture of Leather and Products of Leather, Leather Substitutes and fur, except footwear and Wearing Apparel.

Division	Major Group	Group	Title of Category
		2231	Tanneries and leather finishing.
		2232	Fur dressing and dyeing industries.
		2233	Manufacture of products of leather and leather substitutes, except footwear and wearing apparel.
	224	2240	Manufacture of footwear, except vulcanized or moulded rubber or plastic footwear.
23	<u>Manufacture of Wood and Wood Products, including Furniture.</u>		
	231	<u>Manufacture of Wood and Cork Products, Except Furniture.</u>	
		2311	Sawmills, planing and other wood mills.
		2312	Manufacture of wooden and cane containers and small cane ware.
		2313	Veneer and plywood mills.
		2319	Manufacture of wood and cork products not elsewhere classified.
	232	2320	Manufacture of furniture and fixtures, except primarily of metal.
24	<u>Manufacture of Paper and Paper Products : Printing and Publishing.</u>		
	241	<u>Manufacture of Paper and Paper Products.</u>	
		2411	Manufacture of pulp, paper and paperboard.
		2412	Manufacture of containers and boxes of paper and paperboard.
		2419	Manufacture of pulp, paper and paperboard articles; not elsewhere classified.
	242	2420	Printing, publishing and allied industries.
25	<u>Manufacture of chemicals and chemical, petroleum, coal, rubber and Plastic Products.</u>		
	251	<u>Manufacture of Industrial Chemicals</u>	
		2511	Manufacture of basic industrial chemicals except fertilizer.
		2512	Manufacture of fertilizers and pesticides.
		2513	Manufacture of synthetic resins, plastic materials and man-made fibres except glass.
	252	<u>Manufacture of Other Chemical Product.</u>	
		2521	Manufacture of paints, varnishes and lacquers.
		2522	Manufacture of drugs and medicines.
		2523	Manufacture of soap and cleaning preparations.
		2524	Perfumes, cosmetics and other toilet preparations.
		2525	Manufacture of safety matches.
		2526	Manufacture of mosquito coils and incense, etc.
		2527	Manufacture of fire works.
		2529	Manufacture of chemical products not elsewhere classified.
	253	2530	Petroleum refineries.
	254	2540	Manufacture of miscellaneous products of petroleum and coal.
	255	<u>Manufacture of Rubber Products.</u>	
		2551	Manufacture of primary rubber.
		2552	Tyre and tube industries.
		2559	Manufacture of rubber products not elsewhere classified.
	256	2560	Manufacture of plastic products not elsewhere classified.
26	<u>Manufacture of Non-metallic Mineral Products, Except Products of Petroleum and Coal.</u>		
	261	2610	Manufacture of pottery, china and earthenware.
	262	2620	Manufacture of glass and glass products.

Division	Major Group	Group	Title of Category
	269		<u>Manufacture of Other Non-metallic Mineral Products.</u>
		2691	Manufacture of bricks and tiles.
		2692	Manufacture of other structural clay products.
		2693	Manufacture of cement, lime and plaster.
		2694	Manufacture of marble.
		2695	Manufacture of chalk.
		2696	Manufacture of slates.
		2699	Manufacture of non-metallic mineral products not elsewhere classified.
27			<u>Basic Metal Industries</u>
	271	2710	Iron and steel basic industries.
	272	2720	Non-ferrous metal basic industries.
28			<u>Manufacture of Fabricated Metal Products, Machinery and Equipment.</u>
	281		Manufacture of fabricated metal products, except machinery and equipment:
		2811	Manufacture of cutlery, hand tools and general hardware.
		2812	Manufacture of furnitures and fixtures primarily of metal.
		2813	Manufacture of structural metal products.
		2814	Manufacture of copper and brass ware.
		2815	Manufacture of tin ware.
		2819	Manufacture of fabricated metal products except machinery and equipment not elsewhere classified
	282		<u>Manufacture of Machinery Except Electrical</u>
		2821	Manufacture of engines and turbines.
		2822	Manufacture of agricultural machinery and equipment.
		2823	Manufacture of metal and wood working machinery.
		2824	Manufacture of special industrial machinery and equipment except metal and wood working machinery.
		2825	Manufacture of office, computing and accounting machinery.
		2829	Machinery and equipment except electrical not elsewhere classified.
	283		<u>Manufacture of Electrical Machinery Apparatus, Appliances and Supplies.</u>
		2831	Manufacture of electrical industrial machinery and apparatus.
		2832	Manufacture of radio, television and communication equipment and apparatus.
		2833	Manufacture of electrical appliances and housewares.
		2839	Manufacture of electrical apparatus and supplies not elsewhere classified.
	284		<u>Manufacture of Transport Equipment</u>
		2841	Ship and boat building and repairing.
		2842	Manufacture of railroad equipment.
		2843	Manufacture of motor vehicles.
		2844	Manufacture of motor-cycles and scooters.
		2845	Manufacture of cycles.
		2846	Manufacture of aircraft.
		2847	Manufacture of carts.
		2849	Manufacture of transport equipment not elsewhere classified.
		2850	Manufacture of professional and scientific and measuring and controlling equipment not elsewhere classified and of photographic and optical goods.
		2851	Manufacture of professional and scientific, and measuring and controlling equipment not elsewhere

Division	Major Group	Group	Title of Category
		2852	Manufacture of photographic and optical goods.
		2853	Manufacture of watches and clocks.
29	<u>Other Manufacturing Industries.</u>		
	290	<u>Other Manufacturing Industries.</u>	
		2901	Manufacture of jewellery and related articles.
		2902	Manufacture of musical instruments.
		2903	Manufacture of sporting and athletic goods.
		2904	Manufacture of toys except rubber and plastic toys.
		2905	Cutting and polishing of gems.
		2909	Manufacturing industries not elsewhere classified

MAJOR DIVISION 3 - ELECTRICITY, GAS AND WATER

32	<u>Electricity, Gas and Steam</u>		
	310	<u>Electricity, Gas and Steam</u>	
		3101	Electric light and power.
		3102	Gas manufacture and distribution.
		3103	Steam and hot water supply.
32	<u>Water Works and Supply</u>		
	320	3200	Water works and supply.

MAJOR DIVISION 4 - CONSTRUCTION

40	<u>Construction</u>		
	400	<u>Construction</u>	
		4001	Building construction.
		4002	Construction, other.

MAJOR DIVISION 5 - WHOLESALE AND RETAIL TRADE AND RESTAURANTS AND HOTELS

51	<u>Wholesale Trade</u>		
	510	<u>Wholesale Trade</u>	
		5101	Import trade.
		5102	Export of tea.
		5103	Export of rubber.
		5104	Export of coir and bristle fibre.
		5105	Export of all other Ceylon products.
		5109	Wholesale trade n.e.c.
52	<u>Retail Trade</u>		
	520-521	5201	Retailing of vegetables and fruits.
		5202	Retailing of meat and fish.
		5203	Retailing of other foodstuffs and beverages.
		5204	Retailing of textiles and apparel.
		5205	Retailing of drugs and medicines.
		5206	Retailing of hardware and building materials.
		5207	Retailing of books and stationary.
		5208	Retailing of furniture.
		5209	Retailing of firewood.
		5210	Retailing of jewellery (Gems).
		5211	Retail department stores and variety stores.
		5212	Retailing of petrol and oil.
		5219	Retail trade n.e.c.
53	<u>Restaurants and Hotels.</u>		
	531	5310	Restaurants, cafes and other eating and drinking places.
	532	5320	Hotels, rooming houses, camps and other lodging places.

Division	Major Group	Group	Title of Category
----------	-------------	-------	-------------------

MAJOR DIVISION 6 - TRANSPORT, STORAGE AND COMMUNICATION

61	<u>Transport and Storage</u>		
	611	<u>Land Transport</u>	
		6111	Railway transport.
		6112	Urban, sub-urban and inter-urban highway passenger transport.
		6113	Other passenger land transport.
		6114	Freight transport by road.
		6115	Pipeline transport.
		6116	Supporting services to land transport.
	612	<u>Water Transport.</u>	
		6121	Ocean and coastal water transport.
		6122	Inland water transport.
		6123	Supporting services to water transport.
	613	<u>Air Transport.</u>	
		6131	Air transport carriers.
		6132	Supporting services to air transport.
	619	<u>Services Allied to Transport.</u>	
		6191	Services incidental to transport.
		6192	Storage and warehousing.
62	<u>Communication.</u>		
	620	6200	Communication.

MAJOR DIVISION 7 - FINANCING, INSURANCE, REAL ESTATE AND BUSINESS SERVICES

71	<u>Financial Institutions</u>		
	710	<u>Financial Institutions.</u>	
		7101	Monetary institutions (Banks).
		7102	Other financial institutions, except pawn brokers.
		7103	Pawn brokers.
		7104	Financial services.
72	<u>Insurance</u>		
	720	7200	<u>Insurance.</u>
73	<u>Real Estate and Business Services.</u>		
	731	7310	Real estate.
	732	Business services except machinery and equipment rental and leasing.	
		7321	Legal services.
		7322	Accounting, auditing and book-keeping services.
		7323	Data processing and tabulating services.
		7324	Engineering, architectural and technical services.
		7325	Advertising services.
		7326	Decorating and fashion designing services.
		7329	Business services, except machinery and equipment rent, and leasing, not elsewhere classified.
	733	7330	Machinery and equipment rental and leasing.

MAJOR DIVISION 8 - COMMUNITY, SOCIAL AND PERSONAL SERVICES.

81	<u>Public Administration and Defence.</u>		
	810	8100	Public administration and defence.
82	<u>Sanitary and Similar Services</u>		
	820	8200	Sanitary and similar services.

Division	Major Group	Group	Title of Category
83	<u>Social and Related Community Services.</u>		
	831	8310	Education services.
	832	8320	Research and scientific institutes.
	833		Medical, dental, other health and veterinary services.
		8331	Medical, dental and other health services.
		8332	Veterinary services.
	834	8340	Welfare Institutions.
	835	8350	Business, professional and labour associations.
	839		<u>Other Social and Related Community Services.</u>
		8391	Religious organizations.
		8399	Social and related community services not elsewhere classified.
84	<u>Recreational and Cultural Services.</u>		
	841		<u>Motion Picture and Other Entertainment Services.</u>
		8411	Motion picture production.
		8412	Motion picture distribution and projection.
		8413	Radio and television broadcasting.
		8414	Theatrical producers and entertainment services.
		8415	Authors, music composers, and other independent artist not elsewhere classified.
	842	8420	Libraries, Museums, Botanical and Zoological gardens, and other cultural services not elsewhere classified.
	849	8490	Amusement and recreational services not elsewhere classified.
85	<u>Personal and Household Services.</u>		
	851		Repair services not elsewhere classified.
		8511	Repair of footwear and other leather goods.
		8512	Electrical repair shops.
		8513	Repair of motor vehicles and motorcycles.
		8514	Watch, clock and jewellery repair.
		8515	Bicycle repair.
		8519	Other repair shops not elsewhere classified.
	852	8520	Laundries, Laundry services, and dyeing and finishing plants.
	853	8530	Domestic services.
	859		<u>Miscellaneous Personal Services.</u>
		8591	Barber and beauty shops.
		8592	Photographic studios, including commercial photography.
		8593	Undertakers and morticians.
		8599	Personal services not elsewhere classified.
86	<u>International and Other Extra Territorial Bodies.</u>		
	860	8600	International and other extra territorial bodies.
<u>MAJOR DIVISION 9 - ACTIVITIES NOT ADEQUATELY DEFINED.</u>			
90	900	9000	Activities not adequately defined.