

**Table 16: Unemployed population & unemployment rates by sex
1993 - 2004**

Year	Unemployed Population			Unemployment rate		
	Total	Male	Female	Total	Male	Female
*1993	830910	387663	443247	13.8	9.7	21.7
*1994	797591	394289	403302	13.1	9.7	20.1
*1995	749021	367656	381364	12.3	9.0	18.7
*1996	704604	343741	360864	11.3	8.2	17.7
*1997	658279	322168	336112	10.5	7.7	16.1
*1998	611285	277491	333795	9.2	6.5	14.0
*1999	590846	295217	295629	8.9	6.7	13.0
*2000	517168	260120	257048	7.6	5.8	11.0
*2001	537246	280139	257107	7.9	6.2	11.5
*2002	625967	310421	315546	8.8	6.6	12.9
**2003	640961	310723	330238	8.4	6.0	13.2
***2004	667324	323471	343853	8.3	6.0	12.8

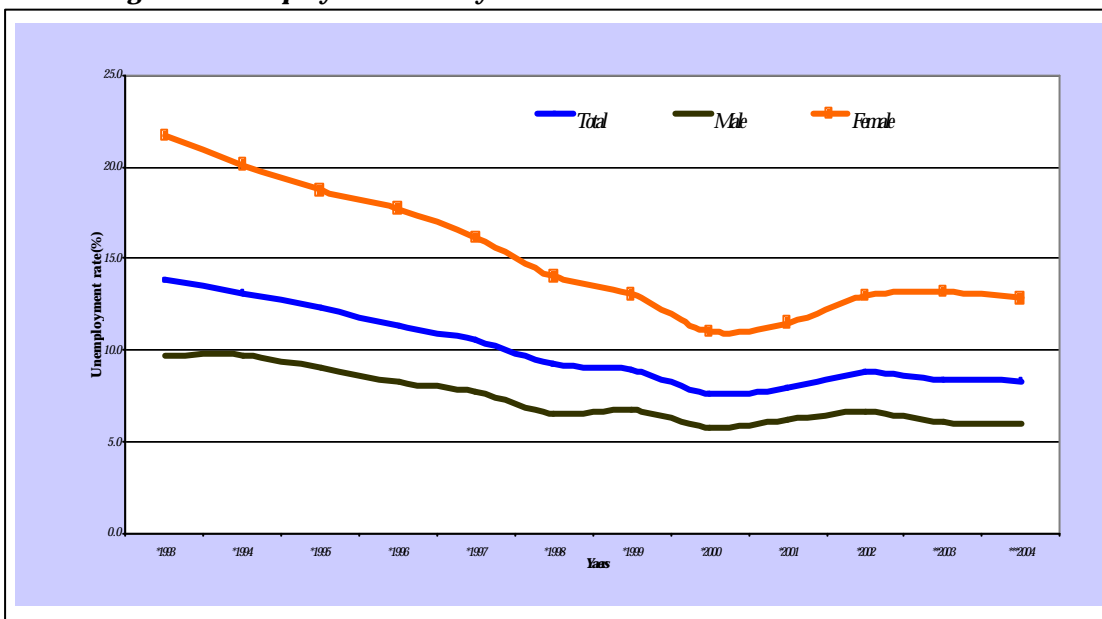
* Excluding Northern & Eastern provinces

** Excluding Northern province

*** Excluding Mullaitivu & Kilinochchi districts

Table 16 gives the unemployed population and unemployment rates since 1993. In 1993 the unemployment rate was 13.8 percent. It is also clear that the unemployment rate for female is more than double the rate for males, throughout this period.

Figure 8: Unemployment rates by sex 1993 - 2004



* Excluding Northern & Eastern provinces

** Excluding Northern province

*** Excluding Mullaitivu & Kilinochchi districts