



**QUARTERLY REPORT OF THE  
SRI LANKA LABOUR FORCE  
SURVEY**

**Quarterly Report – 2014**

**Forth Quarter**

**DEPARTMENT OF CENSUS & STATISTICS  
MINISTRY OF POLICY PLANNING ECONOMIC AFFAIRS,  
CHILD YOUTH AND CULTURAL AFFAIRS**

**ISBN 978 – 955 – 577 – 905 – 0**

# Preface

---

*In the past, information on labour force characteristics, employment and unemployment etc. were collected through labour force and socio - economic surveys conducted at five yearly time intervals. However, the employment and unemployment data are required at very short intervals to monitor the programs made in the employment generating policies of the government. Therefore, to satisfy this need, the Department of Census and Statistics (DCS) designed a labour force survey on a quarterly basis, to measure the levels and trends of employment, unemployment and labour force in Sri Lanka on a continuous basis. This survey was commenced from the first quarter of 1990 and this report is the ninety first in the series of quarterly reports published so far.*

*Current survey concepts and methods are very similar to those introduced at the beginning of the survey in 1990. However, some changes were made over the years to improve the accuracy and usefulness of the data. The significant revisions were made on the labour force survey questionnaire in 1996, 2006 and the latest revision is in 2013. The revised version is introduced for the survey conducted in 2013 First quarter, and this report consists with statistics using new concepts and classifications.*

*The field work of the survey for the fourth quarter 2014 was done in October, November and December in year 2014. This survey covered the whole country. A nationally representative annual sample of about 25,000 housing units have been selected for the survey in 2014. This report is based on a quarterly sample of 6,250 housing units.*

*Dr. A.J. Satharasinghe  
Director General of Census & Statistics*

*Department of Census & Statistics,  
"Sankhyana Mandiraya",  
306/71,  
Polduwa Road,  
Baththaramulla  
15.05.2015.*



# Acknowledgements

---

*This report is ninety second in the series of the Quarterly Labour Force Survey which was commenced from the first quarter 1990 and is being continued by the Department of the Census and statistics.*

*Planning and execution of the survey was done by staff of the Sample Survey Division under the direction of Mr. H.R.Dias, Director, Sample Surveys Division.*

*The survey activities were organized and supervised by Mr. P.A.Subawickrama, Mrs. W.A.C.Wijebandara, Mr.K.S.R.L. Senadeera, Mrs. M.D.D.D.Deepawansa, Statisticians & Miss.C.Jayawickrama, Senior Statistician, of the sample surveys division and Heads of statistics divisions in each district.*

*The computer data processing and final tabulations were done by Mrs. W.A.S.M.P. Gunasekara, Mr.T. Thirugnanatheepan Statistical Officers and Mrs. A.N. Ekanayake and Mr. M.B.M. Shiras, Statistical Assistants of the Sample Surveys Division, under the supervision of Mr. P.A. Subawickrama, Statistician using Microcomputers. The statistical officers, statistical assistants, Information and Communication Technology assistants, Data Entry Officer/Coding clerks and development officers (iii), of the sample survey division are acknowledged for their valuable contribution during the whole survey process.*

*Developing of sample selection programme and its related computer software was done by Mr. K.M.R. Wickramasinghe, AD(ICT).*

*This publication was organized and prepared by Mrs. W.A.C. Wijebandara, Statistician and, Sample Surveys Division, assisted by Mrs. W.A.S.M.P. Gunasekara, Statistical officer. Mrs. Asanthi Ekanayaka, Statistical Assistant assisted at report editing stage.*

*The Information & Communication Technology Division, under the direction of Mr. S.A.S. Bandulasena, Additional Director General (ICT) and under the supervision of Mr. P.M.R.Fernando, Deputy Director (ICT) and Mr. W.H.P.N. Weerasiri Deputy Director (ICT), was responsible for the survey data entry and preparation of data entry and computer edits programmes. Data entry was decentralized and manual editing, coding & data entry were done by responsible officers at district office kachcheries in all districts.*

*District field staff of the Department who worked on the survey deserves a special word of thanks. They include District Deputy Directors/ Senior Statisticians/ Statisticians for supervision and field Statistical Officers, who worked hard at the data collection stage, to make this survey a success. Printing of the report was done at the staff of Printing Division, under the supervision of Mr. M.J.M Fernando, Statistician.*

*Finally, I wish to express my appreciation to all the respondents of the survey for their valuable cooperation.*

**Sri Lanka Labour Force Survey**  
**Summary Statistics on Labour Force Characteristics**  
**2014<sup>4th</sup> Quarter**  
**(All Island)**

**15 years & over population**

	Total	Male	Female	Urban	Rural
Population (15 years & over)	16,607,868	7,670,186	8,937,682	2,880,982	13,726,887
Labour force in this age group	8,782,867	5,698,293	3,084,574	1,406,724	7,376,143
Labour force participation rate	52.9	74.3	34.5	48.8	53.7
Employed population	8,395,762	5,534,061	2,861,702	1,338,150	7,057,613
Employment rate	95.6	97.1	92.8	95.1	95.7
Unemployed population	387,104	164,232	222,872	68,574	318,531
Unemployment rate	4.4	2.9	7.2	4.9	4.3
Not in labour force	7,825,001	1,971,893	5,853,108	1,474,258	6,350,744

**20 years & over population**

	Total	Male	Female	Urban	Rural
Population (20 years & over)	14,895,512	6,843,534	8,051,978	2,626,435	12,269,077
Labour force in this age group	8,532,771	5,526,747	3,006,025	1,378,923	7,153,848
Labour force participation rate	57.3	80.8	37.3	52.5	58.3
Employed population	8,202,591	5,396,805	2,805,785	1,311,511	6,891,080
Employment rate	96.1	97.6	93.3	95.1	96.3
Unemployed population	330,180	129,941	200,239	67,412	262,768
Unemployment rate	3.9	2.4	6.7	4.9	3.7
Not in labour force	6,362,741	1,316,787	5,045,953	1,247,513	5,115,228

## Selected Labour Force Indicators ...

Indicator	Year										
	2011*	2012*	2013*	2011**	2012**	2013**	2014Q1**	2014Q2**	2014Q3**	2013Q4**	2014Q4**
<b>Labour force participation rate</b>											
<b>By Gender</b>											
Total	53.4	53.0	54.2	53.0	52.6	53.8	53.4	53.6	53.2	53.0	52.9
Male	74.2	75.2	75.0	74.0	75.0	74.9	74.4	75.2	74.6	74.4	74.3
Female	35.0	33.5	36.3	34.4	32.9	35.6	35.3	34.8	34.4	34.7	34.5
<b>By residential sector</b>											
Total	53.4	53.0	54.2	53.0	52.6	53.8	53.4	53.6	53.2	53.0	52.9
Urban	48.5	48.7	48.0	47.8	48.4	47.8	49.3	50.2	47.1	46.0	48.8
Rural	54.2	53.9	55.5	53.8	53.5	55.0	54.2	54.2	54.4	54.4	53.7
<b>Unemployment Rate</b>											
<b>By Gender</b>											
Total	4.2	3.9	4.3	4.2	4.0	4.4	4.1	4.5	4.2	4.1	4.4
Male	2.7	2.9	3.2	2.7	2.8	3.2	3.0	3.4	3.3	2.8	2.9
Female	6.8	6.0	6.4	7.0	6.2	6.6	6.1	6.7	6.0	6.4	7.2
<b>By selected age Group (Year)</b>											
20 – 29	12.4	11.1	13.0	12.3	11.3	13.0	13.3	13.8	14.0	13.7	13.5
20 – 24	18.0	16.7	19.3	17.7	16.8	19.2	19.1	18.8	20.8	19.7	21.2
25 – 29	7.5	6.5	7.5	7.6	6.6	7.5	8.6	9.4	8.1	8.3	6.9
<b>By selected educational level</b>											
<b>A/L &amp; above</b>											
Total	9.0	7.3	8.4	9.0	7.5	8.6	6.9	8.7	7.9	8.1	8.8
Male	5.4	4.3	5.6	5.4	4.5	5.7	3.6	5.7	6.3	5.0	5.6
Female	13.1	10.5	11.3	13.1	10.8	11.6	10.3	11.9	9.6	11.2	12.0
<b>Employed population</b>											
<b>By Gender</b>											
Total	7,883,817	7,791,831	8,070,542	8,186,305	8,118,362	8,417,674	8,407,212	8,413,171	8,479,829	8,319,680	8,395,762
Male	5,219,712	5,224,743	5,233,167	5,452,723	5,469,759	5,498,815	5,484,351	5,560,143	5,613,970	5,451,097	5,534,061
Female	2,664,105	2,567,089	2,837,375	2,733,582	2,648,603	2,918,859	2,922,861	2,853,028	2,865,859	2,868,583	2,861,702
<b>By industry (Percentage)</b>											
Total	7,883,817	7,791,831	8,070,542	8,186,305	8,118,362	8,417,674	8,407,212	8,413,171	8,479,829	8,319,680	8,395,762
%	100.0	100.0	100.0	100.0	100.0	100.0	100.0	100.0	100.0	100.0	100.0
Agriculture	2,593,048	2,412,066	2,390,884	2,699,244	2,513,673	2,504,310	2,222,097	2,368,845	2,455,034	2,546,819	2,552,541
%	32.9	31.0	29.6	33.0	31.0	29.8	26.4	28.2	29.0	30.6	30.4
Industry	1,914,671	2,042,262	2,125,376	1,976,711	2,117,286	2,202,159	2,338,905	2,189,738	2,253,174	2,095,213	2,134,233
%	24.3	26.2	26.3	24.1	26.1	26.2	27.8	26.0	26.6	25.2	25.4
Services	3,376,099	3,337,503	3,554,282	3,510,350	3,487,403	3,711,204	3,846,210	3,854,588	3,771,621	3,677,649	3,708,988
%	42.8	42.8	44.0	42.9	43.0	44.1	45.7	45.8	44.5	44.2	44.2
<b>By no. of hours worked per week (percentage)</b>											
Total	100.0	100.0	100.0	100.0	100.0	100.0	100.0	100.0	100.0	100.0	100.0
0 <sup>#</sup>	5.3	4.6	5.2	5.2	4.5	5.2	2.9	9.8	4.1	3.7	3.8
1 – 9	1.8	1.2	1.8	1.7	1.2	1.8	1.2	1.7	1.0	1.3	1.3
10 – 39	29.7	25.6	27.0	29.9	26.0	27.4	27.4	33.7	24.6	26.3	24.5
40 & above	63.2	68.6	66.0	63.1	68.3	65.6	68.5	54.8	70.3	68.8	70.4

# has a job but not at work during the reference week

\* Excluding Northern Province

\*\* Whole island covered

Note : Working age population considered as (age 15 & over population)

# CONTENTS

Page No.

Preface	iii
Acknowledgements	v
Highlights	vii
Summary Statistics	viii
Contents	ix
Working Age Population	1
Employed Population	2
Unemployed Population	3

## Tables

### Table No.

1.	Historical table of Labour Force Status (current) of the Household Population, 15 years of Age and over - Both Sexes	4
1A.	Historical table of Labour Force Status (current) of the Household Population, 15 years of Age and over – Male	5
1B.	Historical table of Labour Force Status (current) of the Household Population, 15 years of Age and over – Female	5
2.	Labour Force Status (current) of the Household Population 15 years of Age and over, by Age - Both Sexes	6
2A.	Labour Force Status (current) of the Household Population 15 years of Age and over, by Age – Male	7
2B.	Labour Force Status (current) of the Household Population 15 years of Age and over, by Age – Female	7
3.	Historical table of Currently Employed persons by Age Groups (percentage) - Both Sexes	8
3A.	Historical table of Currently Employed persons by Age Groups (percentage) – Male	8
3B.	Historical table of Currently Employed persons by Age Groups (percentage) – Female	8
4.	Historical table of Currently Employed persons by Level of Education (percentage) - Both Sexes	9
4A.	Historical table of Currently Employed persons by Level of Education (percentage) – Male	9
4B.	Historical table of Currently Employed persons by Level of Education (percentage) – Female	9
5.	Historical table of Currently Employed persons by Employment Status (percentage) - Both Sexes	10
5A.	Historical table of Currently Employed persons by Employment Status (percentage) – Male	10
5B.	Historical table of Currently Employed persons by Employment Status (percentage) – Female	10
6.	Currently employed persons by Industry group (Based on ISIC Rev.4) – Both sexes	11
6A.	Currently employed persons by Industry group (Based on ISIC Rev.4) – Male	12
6B.	Currently employed persons by Industry group (Based on ISIC Rev.4) – Female	13
6C.	Historical table of currently employed population by major industry group - Both sexes	14
6D.	Historical table of currently employed population by major industry group (percentage) - Both sexes	14
7.	Currently employed persons by Occupation group (Based on ISCO 08) - Both sexes	15
7A.	Currently employed persons by Occupation group (Based on ISCO 08) – Male	16
7B.	Currently employed persons by Occupation group (Based on ISCO 08) – Female	16
8.	Currently Employed persons by hours per week actually worked at the main job and Major Industrial group (percentage) - Both Sexes	17
9.	Historical table of Currently Unemployed persons by Age Groups (percentage) - Both Sexes	18
9A.	Historical table of Currently Unemployed persons by Age Groups (percentage) – Male	18
9B.	Historical table of Currently Unemployed persons by Age Groups (percentage) – Female	18
10.	Historical table of Currently Unemployed persons by Level of Education (percentage) - Both Sexes	19
10A.	Historical table of Currently Unemployed persons by Level of Education (percentage) – Male	19
10B.	Historical table of Currently Unemployed persons by Level of Education (percentage) – Female	19
11.	Currently Unemployed Persons by Sex and Duration of Unemployment	20
12.	Standard error and coefficient of variation of selected variables	21

*Appendix 1: Explanatory Notes*

*Appendix 2: Alternative estimates of employment, unemployment and labour force characteristics*

*Appendix 3: Survey schedule*



# Introduction

## Highlights

- Labour force participation rate is 52.9% for the Fourth Quarter of 2014.
- Unemployment rate for the survey period is 4.4%.

## Inside

Labour Force	1
Employment	2
Unemployment	3
Selected Labour Force Indicators	4

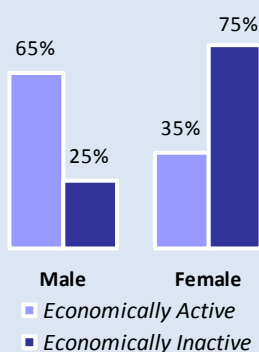


Figure 1 : Distribution of Economically active/Inactive population- Fourth Quarter 2014

Sri Lanka Labour Force Survey (LFS) is designed to measure the levels and trends of employment, unemployment and labour force in Sri Lanka. LFS has been conducted quarterly, since the first quarter of 1990.

The field work of the survey for the Fourth quarter of 2014 was done in October, November and December covering the whole country.

## Labour Force

(Currently Economically Active Population)  
Number of persons (age 15 years & above) who are employed or unemployed during the reference week

## Labour force participation rate (LFPR)

Labour force population expressed as a percentage of the population, age 15 years and over

## Labour Force ...

Table 1 : Economically active population by gender and sector – Fourth Quarter 2014

Sector	Economically active population					
	Total	%	Male	%	Female	%
Sri Lanka	8,782,867	100.0	5,698,293	64.9	3,084,574	35.1
Urban	1,406,724	100.0	946,531	67.3	460,193	32.7
Rural	6,982,431	100.0	4,531,246	64.9	2,451,185	35.1
Estate	393,712	100.0	220,516	56.0	173,196	44.0

According to the Table 1, the estimated economically active population is about 8.8 million in the Fourth quarter 2014. Of which 64.9 percent are males and 35.1 percent are females. Out of the economically inactive population 25.2 percent are males and 74.8 percent are females (Table 2).

Table 2 : Economically inactive population by gender and sector – Fourth Quarter 2014

Sector	Economically inactive population					
	Total	%	Male	%	Female	%
Sri Lanka	7,825,001	100.0	1,971,893	25.2	5,853,108	74.8
Urban	1,474,258	100.0	409,048	27.7	1,065,210	72.3
Rural	6,104,511	100.0	1,485,851	24.3	4,618,661	75.7
Estate	246,232	100.0	76,994	31.3	169,238	68.7

Table 4 : LFPR by age group and gender - Fourth Quarter 2014

Age group (Years)	Total	Male	Female
Sri Lanka	52.9	74.3	34.5
15 - 19	14.6	20.8	8.9
20 - 24	54.1	72.7	38.4
25 - 29	66.2	93.9	44.7
30 - 34	65.2	96.7	40.5
35 - 39	71.2	96.5	47.8
40 - 44	70.9	95.7	50.5
45 - 49	70.3	95.0	47.9
50 - 54	65.9	92.5	42.8
55 - 59	61.5	85.1	40.5
60+	28.1	44.8	13.7

Table 3 : LFPR by gender and year (Excluding Northern province: to keep same domain for the purpose of comparison.)

Year	Total	Male	Female
2008	55.1	76.1	36.6
2009	54.1	74.7	36.2
2010	53.4	75.0	34.4
2011	53.4	74.2	35.0
2012	53.0	75.2	33.5
2013	54.9	75.1	37.5
2014 Q1	53.8	74.7	35.7
2014 Q2	54.0	75.5	35.3
2014 Q3	53.5	74.8	34.9
2014 Q4	53.2	74.4	35.0

Table 3 provides the information on LFPRs since year 2008. Referring the table 3, It is important to note that, male participation to the labour force is always higher than that of females.

Considering the Table 4, the distribution of LFPR by age group and by gender depicts high male participation compared to female in all age groups. The highest rate for male was reported from age group 30 – 34 years (96.7%), while that of females was reported from the age group of 40 – 44 years (50.5%).

## Employed ...

During the reference period, persons, who worked as paid employees, employers, own account workers (self employed), or contributing family workers are said to be employed

This also includes persons with a job but not at work during the reference period

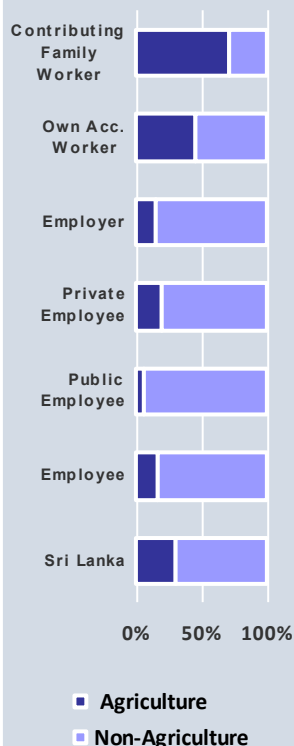


Figure 2: Distribution of employed population by employment status and Agriculture/Non-Agriculture sector - Fourth Quarter 2014

As shown in Figure 2 & Table 6 contributing family workers are highly concentrated in Agriculture sector.

## Employment ...

Table 5: Distribution of Employed population by main industry  
(Fourth Quarter 2013 - Fourth Quarter 2014)

Quarter	Sri Lanka	Major Industry Group		
		Agriculture	Industries	Services
2013 Q4 (No.)	8,319,680	2,546,819	2,095,213	3,677,649
(%)	100.0	30.6	25.2	44.2
2014 Q1 (No.)	8,407,212	2,222,097	2,338,905	3,846,210
(%)	100.0	26.4	27.8	45.7
2014 Q2 (No.)	8,413,171	2,368,845	2,189,738	3,854,588
(%)	100.0	28.2	26.0	45.8
2014 Q3 (No.)	8,479,829	2,455,034	2,253,174	3,771,621
(%)	100.0	29.0	26.6	44.5
2014 Q4 (No.)	8,395,762	2,552,541	2,134,233	3,708,988
(%)	100.0	30.4	25.4	44.2

Table 5 shows the percentage distribution of employed population by main industry from Fourth quarter 2013 to Fourth quarter 2014. During Fourth quarter of 2014, the total number of employed persons in Sri Lanka is estimated as about 8.4 million. Of which, about 44.2 percent engaged in Services sector, 25.4 percent in Industries sector and 30.4 percent in Agriculture sector.

Table 6: Distribution of employed population by employment status and Agriculture/Non-Agriculture sector - Fourth Quarter 2014

Employment Status	Sri Lanka		Sector			
			Agriculture		Non-Agriculture	
	No.	%	No.	%	No.	%
Sri Lanka	8,395,762	100.0	2,552,541	30.4	5,843,221	69.6
Employee	4,808,033	100.0	769,834	16.0	4,038,199	84.0
Public	1,287,855	100.0	69,192	5.4	1,218,663	94.6
Private	3,520,178	100.0	700,642	19.9	2,819,536	80.1
Employer	191,895	100.0	27,960	14.6	163,935	85.4
Own Account Worker	2,670,876	100.0	1,233,921	46.2	1,436,956	53.8
Contributing Family Worker	724,958	100.0	520,826	71.8	204,131	28.2

Table 7: Distribution of Employed population by main industry & sex - Fourth Quarter 2014

Major Industry Group	Sri Lanka	Gender	
		Male	Female
Sri Lanka	100.0	100.0	100.0
Agriculture	30.4	28.6	33.9
Industry	25.4	26.1	24.1
Services	44.2	45.3	42.0

## Main industry categories and sub sectors

### Agriculture

1. Agriculture Forestry and Fishery (A)

### Industries

1. Mining & Quarrying (B)
2. Manufacturing (C)
3. Construction, Electricity, gas, steam and air conditioning supply, Water supply, sewerage, waste management and remediation activities (D, E, F)

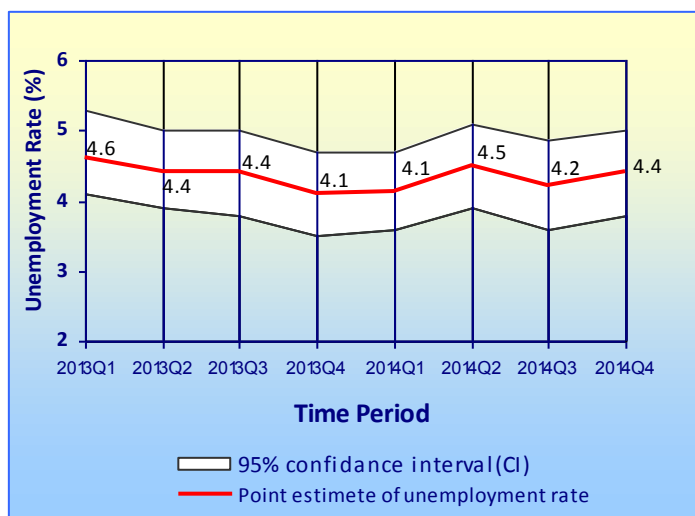
### Services

1. Wholesale and retail trade, repair of motor vehicles and motor cycles (G)
2. Transportation and storage (H)
3. Accommodation and food services activities (I)
4. Information and communication (J)
5. Financial and insurance activities (K)
6. Professional, scientific and technical activities (M)
7. Administrative and support service activities (N)
8. Public administration and defense compulsory social security (O)
9. Education (P)
10. Human health and social work activities (Q)
11. Other service activities (S)
12. Activities of households as employers; undifferentiated goods and services - producing activities of households for own use (T)
13. Real estate activities (L) Arts, entertainment and recreation (R) Activities of extra territorial organizations & bodies (U)

Table 7 depicts the percentage distribution of male and female employed population by main industries. Regardless of the gender, the highest employment concentration is in service sector. Among employed female 33.9 percent is in agriculture sector while this share is 28.6 percent for males.

# Unemployment ...

Figure 3 : Unemployment rates and its 95% confidence intervals (2013Q1 - 2014Q4)



<sup>1</sup>Sampling error : When a sample, rather than the entire population, is surveyed, estimates differ from the true population values they represent. This difference, or sampling error, occurs by chance, and its variability is measured by the sampling error of the estimate.

For more details, please refer the explanatory note given under the labour force link in the DCS website; [www.statistics.gov.lk](http://www.statistics.gov.lk)

Table 8: Unemployment rate by age group and gender – Fourth Quarter 2014

Age group (Years)	Sri Lanka	Gender	
		Male	Female
Sri Lanka	4.4	2.9	7.2
15–24	21.6	15.5	32.1
25–29	6.9	4.5	10.7
Over 30	1.5	0.9	2.7

These figures are to be treated with caution as the corresponding CV (Coefficient of variation) values are high.

The survey results further revealed that the unemployment among females is higher than that of males, in all age groups.

The highest unemployment rate is reported from the G.C.E (A/L) and above group which is about 8.8 percent. Corresponding percentages are 5.6 percent and 12.0 percent for males and females respectively. Female unemployment rates are higher than those of males in all levels of education.

Table 9: Unemployment rate by level of education – Fourth Quarter 2014

Level of Education	Unemployment Rate (%)		
	Sri Lanka	Male	Female
Sri Lanka	4.4	2.9	7.2
Below GCE O/L	2.6	2.1	3.8
GCE O/L	6.2	3.8	10.5
GCE A/L & above	8.8	5.6	12.0

This further shows that the problem of unemployment is more acute in the case of educated females than educated males.

## Unemployed ...

Persons available and/or looking for work, and who did not work and taken steps to find a job during last four weeks and ready to accept a job given a work opportunity within next two weeks are said to be unemployed

The number of unemployed persons is estimated as about 387,104 during the Fourth quarter 2014. The unemployment rate for the Fourth quarter 2014 is 4.4 percent.

As shown in Figure 3, it is very important to note that, when sampling error<sup>1</sup> is considered there are no statistically significant drops/increases of unemployment rates reported in different time periods starting from First quarter 2013 to Fourth quarter 2014.

## Unemployment Rate ...

The proportion of unemployed population to the total labour force

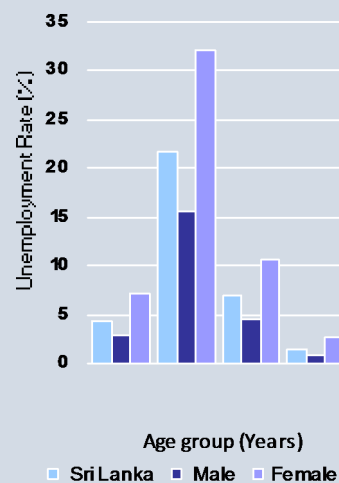


Figure 3: Unemployment rate by age group and gender – Fourth Quarter 2014

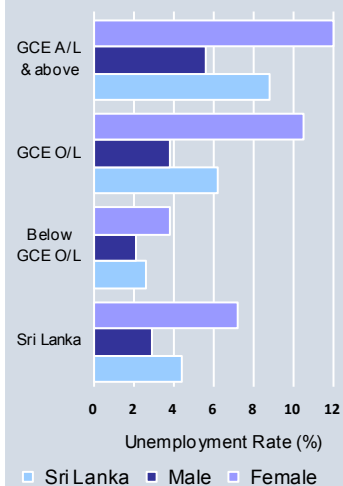


Figure 4: Unemployment rate by level of education and gender – Fourth Quarter 2014

**TABLE 1 - HISTORICAL TABLE OF LABOUR FORCE STATUS (CURRENT) OF THE HOUSEHOLD POPULATION, 15 YEARS OF AGE AND OVER - BOTH SEXES**

NATIONAL LEVEL DATA								
YEAR	HOUSEHOLD POPULATION (15 YEARS & OVER)	LABOUR FORCE						NOT IN LABOUR FORCE NUMBER
		TOTAL LABOUR FORCE	LABOUR FORCE PARTICI: RATE(%)	EMPLOYED		UNEMPLOYED		
				NUMBER	RATE (% TO TOTAL LABOUR FORCE)	NUMBER	RATE (% TO TOTAL LABOUR FORCE)	
2006 <sup>1</sup>	13,261,409	7,576,415	57.1	7,084,346	93.5	492,069	6.5	5,684,994
2007 <sup>1</sup>	13,459,252	7,472,932	55.5	7,026,733	94.0	446,199	6.0	5,986,320
2008 <sup>2</sup>	14,626,833	8,061,725	55.1	7,628,683	94.6	433,042	5.4	6,565,107
2009 <sup>2</sup>	14,876,264	8,051,089	54.1	7,579,835	94.1	471,254	5.9	6,825,175
2010 <sup>2</sup>	15,166,285	8,096,477	53.4	7,696,142	95.1	400,335	4.9	7,069,808
2011 <sup>3</sup>	16,122,111	8,543,776	53.0	8,186,305	95.8	357,471	4.2	7,578,335
2012 <sup>3</sup>	16,081,285	8,454,364	52.6	8,118,362	96.0	336,002	4.0	7,626,921
2013 <sup>3</sup>	16,359,761	8,802,113	53.8	8,417,674	95.6	384,439	4.4	7,557,648
2014Q1 <sup>3</sup>	16,419,548	8,769,538	53.4	8,407,212	95.9	362,326	4.1	7,650,010
2014Q2 <sup>3</sup>	16,454,039	8,811,836	53.6	8,413,171	95.5	398,665	4.5	7,642,203
2014Q3 <sup>3</sup>	16,645,617	8,853,951	53.2	8,479,829	95.8	374,122	4.2	7,791,666
2014Q4 <sup>3</sup>	16,607,868	8,782,867	52.9	8,395,762	95.6	387,104	4.4	7,825,001

<sup>1</sup> - Excluding Northern & Eastern provinces

<sup>3</sup> - All the districts are included

<sup>2</sup> - Including Eastern province but Excluding Northern province

**TABLE 1A - HISTORICAL TABLE OF LABOUR FORCE STATUS (CURRENT) OF THE HOUSEHOLD POPULATION,  
15 YEARS OF AGE AND OVER - MALE**

YEAR	HOUSEHOLD POPULATION (15 YEARS & OVER)	LABOUR FORCE						NOT IN LABOUR FORCE NUMBER
		TOTAL LABOUR FORCE	LABOUR FORCE PARTICI: RATE(%)	EMPLOYED		UNEMPLOYED		
				NUMBER	RATE (% TO TOTAL LABOUR FORCE)	NUMBER	RATE (% TO TOTAL LABOUR FORCE)	
2006 <sup>1</sup>	6,287,747	4,822,204	76.7	4,596,634	95.3	225,570	4.7	1,465,543
2007 <sup>1</sup>	6,372,572	4,853,559	76.2	4,643,931	95.7	209,627	4.3	1,519,013
2008 <sup>2</sup>	6,848,600	5,212,933	76.1	5,018,954	96.3	193,978	3.7	1,635,668
2009 <sup>2</sup>	6,925,821	5,173,106	74.7	4,949,825	95.7	223,281	4.3	1,752,715
2010 <sup>2</sup>	7,078,246	5,310,872	75.0	5,125,763	96.5	185,108	3.5	1,767,374
2011 <sup>3</sup>	7,570,144	5,605,446	74.0	5,452,723	97.3	152,723	2.7	1,964,698
2012 <sup>3</sup>	7,508,356	5,629,617	75.0	5,469,759	97.2	159,858	2.8	1,878,740
2013 <sup>3</sup>	7,577,344	5,677,815	74.9	5,498,815	96.8	179,000	3.2	1,899,529
2014Q1 <sup>3</sup>	7,602,293	5,655,705	74.4	5,484,351	97.0	171,354	3.0	1,946,588
2014Q2 <sup>3</sup>	7,656,783	5,754,446	75.2	5,560,143	96.6	194,303	3.4	1,902,337
2014Q3 <sup>3</sup>	7,778,242	5,805,087	74.6	5,613,970	96.7	191,117	3.3	1,973,156
2014Q4 <sup>3</sup>	7,670,186	5,698,293	74.3	5,534,061	97.1	164,232	2.9	1,971,893

**TABLE 1B - HISTORICAL TABLE OF LABOUR FORCE STATUS (CURRENT) OF THE HOUSEHOLD POPULATION,  
15 YEARS OF AGE AND OVER - FEMALE**

YEAR	HOUSEHOLD POPULATION (15 YEARS & OVER)	LABOUR FORCE						NOT IN LABOUR FORCE NUMBER
		TOTAL LABOUR FORCE	LABOUR FORCE PARTICI: RATE(%)	EMPLOYED		UNEMPLOYED		
				NUMBER	RATE (% TO TOTAL LABOUR FORCE)	NUMBER	RATE (% TO TOTAL LABOUR FORCE)	
2006 <sup>1</sup>	6,973,662	2,754,211	39.5	2,487,711	90.3	266,499	9.7	4,219,451
2007 <sup>1</sup>	7,086,680	2,619,373	37.0	2,382,801	91.0	236,572	9.0	4,467,307
2008 <sup>2</sup>	7,778,232	2,848,793	36.6	2,609,729	91.6	239,064	8.4	4,929,440
2009 <sup>2</sup>	7,950,443	2,877,983	36.2	2,630,010	91.4	247,973	8.6	5,072,460
2010 <sup>2</sup>	8,088,039	2,785,605	34.4	2,570,379	92.3	215,226	7.7	5,302,434
2011 <sup>3</sup>	8,551,967	2,938,329	34.4	2,733,582	93.0	204,748	7.0	5,613,637
2012 <sup>3</sup>	8,572,929	2,824,747	32.9	2,648,603	93.8	176,144	6.2	5,748,181
2013 <sup>3</sup>	8,782,417	3,124,298	35.6	2,918,859	93.4	205,439	6.6	5,658,119
2014Q1 <sup>3</sup>	8,817,255	3,113,833	35.3	2,922,861	93.9	190,972	6.1	5,703,422
2014Q2 <sup>3</sup>	8,797,256	3,057,390	34.8	2,853,028	93.3	204,362	6.7	5,739,867
2014Q3 <sup>3</sup>	8,867,375	3,048,865	34.4	2,865,859	94.0	183,005	6.0	5,818,510
2014Q4 <sup>3</sup>	8,937,682	3,084,574	34.5	2,861,702	92.8	222,872	7.2	5,853,108

<sup>1</sup> - Excluding Northern & Eastern provinces

<sup>3</sup> - All the districts are included

<sup>2</sup> - Including Eastern province but Excluding Northern province

**TABLE 2 - LABOUR FORCE STATUS (CURRENT) OF THE HOUSEHOLD POPULATION 15 YEARS OF AGE AND OVER ,BY AGE - BOTH SEXES**

(2014 4th Quarter)

AGE	HOUSEHOLD POP: (15 YEARS & OVER)	LABOUR FORCE						NOT IN LABOUR FORCE NUMBER
		TOTAL LABOUR FORCE	LABOUR FORCE PARTICI: RATE(%)	EMPLOYED		UNEMPLOYED		
				NUMBER	RATE (% TO TOTAL LABOUR FORCE)	NUMBER	RATE (% TO TOTAL LABOUR FORCE)	
<b>ALL AGES</b>	16,607,868	8,782,867	52.88	8,395,762	95.59	387,104	4.41	7,825,001
15 - 19 YRS	1,712,356	250,096	14.61	193,172	77.24	56,924	22.76	1,462,261
20 - 24 YRS	1,435,143	776,158	54.08	611,516	78.79	164,642	21.21	658,984
25 - 29 YRS	1,360,393	899,945	66.15	838,146	93.13	61,800	6.87	460,448
30 - 39 YRS	3,167,562	2,159,578	68.18	2,097,524	97.13	62,054	2.87	1,007,983
40 + YRS	8,932,415	4,697,089	52.58	4,655,405	99.11	41,684	0.89	4,235,325

**TABLE 2A - LABOUR FORCE STATUS (CURRENT) OF THE HOUSEHOLD POPULATION 15 YEARS OF AGE AND OVER ,BY AGE - MALE**

(2014 4th Quarter)

AGE	HOUSEHOLD POP: (15 YEARS & OVER)	LABOUR FORCE						NOT IN LABOUR FORCE NUMBER
		TOTAL LABOUR FORCE	LABOUR FORCE PARTICI: RATE(%)	EMPLOYED		UNEMPLOYED		
				NUMBER	RATE (% TO TOTAL LABOUR FORCE)	NUMBER	RATE (% TO TOTAL LABOUR FORCE)	
ALL AGES	7,670,186	5,698,293	74.3	5,534,061	97.1	164,232	2.9	1,971,893
15 - 19 YRS	826,652	171,547	20.8	137,255	80.0	34,291	20.0	655,106
20 - 24 YRS	656,479	477,083	72.7	410,925	86.1	66,158	13.9	179,397
25 - 29 YRS	592,086	556,197	93.9	531,305	95.5	24,892	4.5	35,889
30 - 39 YRS	1,456,881	1,407,091	96.6	1,391,109	98.9	15,982	1.1	49,790
40 + YRS	4,138,088	3,086,376	74.6	3,063,467	99.3	22,909	0.7	1,051,712

**TABLE 2B - LABOUR FORCE STATUS (CURRENT) OF THE HOUSEHOLD POPULATION 15 YEARS OF AGE AND OVER ,BY AGE - FEMALE**

(2014 4th Quarter)

AGE	HOUSEHOLD POP: (15 YEARS & OVER)	LABOUR FORCE						NOT IN LABOUR FORCE NUMBER
		TOTAL LABOUR FORCE	LABOUR FORCE PARTICI: RATE(%)	EMPLOYED		UNEMPLOYED		
				NUMBER	RATE (% TO TOTAL LABOUR FORCE)	NUMBER	RATE (% TO TOTAL LABOUR FORCE)	
<b>ALL AGES</b>	8,937,682	3,084,574	34.5	2,861,702	92.8	222,872	7.2	5,853,108
15 - 19 YRS	885,704	78,549	8.9	55,916	71.2	22,633	28.8	807,155
20 - 24 YRS	778,664	299,076	38.4	200,591	67.1	98,485	32.9	479,588
25 - 29 YRS	768,307	343,748	44.7	306,841	89.3	36,907	10.7	424,559
30 - 39 YRS	1,710,681	752,488	44.0	706,415	93.9	46,072	6.1	958,193
40 + YRS	4,794,327	1,610,713	33.6	1,591,938	98.8	18,775	1.2	3,183,614

These figures are to be treated with caution as the corresponding CV (Coefficient of variation) values are high.

**TABLE 3 - HISTORICAL TABLE OF CURRENTLY EMPLOYED PERSONS BY AGE GROUPS  
(PERCENTAGE) - BOTH SEXES**

Year	All Ages	Age Groups				
		15 - 19 YRS	20 - 24 YRS	25 - 29 YRS	30 - 39 YRS	40+ YRS
2006 <sup>1</sup>	100.0	4.1	10.3	12.1	24.3	49.3
2007 <sup>1</sup>	100.0	3.6	9.8	12.1	24.0	50.6
2008 <sup>2</sup>	100.0	3.4	9.9	11.7	24.0	51.0
2009 <sup>2</sup>	100.0	3.4	8.6	11.5	24.4	52.1
2010 <sup>2</sup>	100.0	3.0	8.5	10.9	24.0	53.5
2011 <sup>3</sup>	100.0	3.1	8.6	11.0	24.3	53.0
2012 <sup>3</sup>	100.0	2.5	8.3	11.0	25.2	53.0
2013 <sup>3</sup>	100.0	2.7	7.9	10.1	24.8	54.5
2014Q1 <sup>3</sup>	100.0	2.3	7.1	9.8	24.9	55.8
2014Q2 <sup>3</sup>	100.0	2.4	7.7	9.7	25.3	55.0
2014Q3 <sup>3</sup>	100.0	2.5	6.9	9.3	26.0	55.4
2014Q4 <sup>4</sup>	100.0	2.3	7.3	10.0	25.0	55.4

**TABLE 3A - HISTORICAL TABLE OF CURRENTLY EMPLOYED PERSONS BY AGE GROUPS  
(PERCENTAGE) - MALE**

Year	All Ages	Age Groups				
		15 - 19 YRS	20 - 24 YRS	25 - 29 YRS	30 - 39 YRS	40+ YRS
2006 <sup>1</sup>	100.0	4.0	10.2	12.3	24.0	49.5
2007 <sup>1</sup>	100.0	3.7	9.6	12.7	23.8	50.2
2008 <sup>2</sup>	100.0	3.6	9.7	11.9	24.1	50.7
2009 <sup>2</sup>	100.0	3.5	8.4	11.8	24.3	52.0
2010 <sup>2</sup>	100.0	3.1	8.2	11.3	24.1	53.3
2011 <sup>3</sup>	100.0	3.2	8.6	11.3	24.3	52.5
2012 <sup>3</sup>	100.0	2.7	8.3	11.2	25.2	52.6
2013 <sup>3</sup>	100.0	2.9	7.8	10.2	25.0	54.1
2014Q1 <sup>3</sup>	100.0	2.4	7.3	9.6	25.2	55.4
2014Q2 <sup>3</sup>	100.0	2.2	8.0	9.8	25.7	54.3
2014Q3 <sup>3</sup>	100.0	2.6	6.4	9.3	26.2	55.5
2014Q4 <sup>4</sup>	100.0	2.5	7.4	9.6	25.1	55.4

**TABLE 3B - HISTORICAL TABLE OF CURRENTLY EMPLOYED PERSONS BY AGE GROUPS  
(PERCENTAGE) - FEMALE**

Year	All Ages	Age Groups				
		15 - 19 YRS	20 - 24 YRS	25 - 29 YRS	30 - 39 YRS	40+ YRS
2006 <sup>1</sup>	100.0	4.1	10.3	11.7	24.9	49.0
2007 <sup>1</sup>	100.0	3.4	10.1	10.8	24.3	51.4
2008 <sup>2</sup>	100.0	3.2	10.2	11.2	24.0	51.5
2009 <sup>2</sup>	100.0	3.3	8.9	11.0	24.6	52.2
2010 <sup>2</sup>	100.0	2.9	9.2	10.0	23.9	54.0
2011 <sup>3</sup>	100.0	2.8	8.5	10.3	24.4	54.0
2012 <sup>3</sup>	100.0	2.2	8.5	10.5	25.1	53.7
2013 <sup>3</sup>	100.0	2.4	8.0	10.0	24.3	55.2
2014Q1 <sup>3</sup>	100.0	2.1	6.6	10.1	24.5	56.6
2014Q2 <sup>3</sup>	100.0	2.6	7.0	9.6	24.5	56.3
2014Q3 <sup>3</sup>	100.0	2.2	7.8	9.4	25.5	55.2
2014Q4 <sup>4</sup>	100.0	2.0	7.0	10.7	24.7	55.6

<sup>1</sup> - Excluding Northern & Eastern provinces

<sup>3</sup> - All the districts are included

<sup>2</sup> - Including Eastern province but Excluding Northern province



**TABLE 4 - HISTORICAL TABLE OF CURRENTLY EMPLOYED PERSONS BY LEVEL OF EDUCATION  
(PERCENTAGE) - BOTH SEXES**

Year	Total	Level of education			
		Grade 5 & Below	Grades 6 - 10	GCE (O.L)/ NCGE	GCE (A.L)/ HNCE & above
2006 <sup>1</sup>	100.0	22.2	46.8	16.8	14.3
2007 <sup>1</sup>	100.0	21.1	47.8	15.6	15.5
2008 <sup>2</sup>	100.0	20.8	47.4	15.8	15.9
2009 <sup>2</sup>	100.0	21.1	47.2	15.5	16.2
2010 <sup>2</sup>	100.0	20.2	48.2	15.9	15.8
2011 <sup>3</sup>	100.0	18.8	48.1	15.7	17.4
2012 <sup>3</sup>	100.0	18.5	47.2	17.6	16.7
2013 <sup>3</sup>	100.0	17.9	47.8	16.0	18.3
2014Q1 <sup>3</sup>	100.0	16.9	48.2	15.9	19.1
2014Q2 <sup>3</sup>	100.0	16.9	48.0	16.1	19.0
2014Q3 <sup>3</sup>	100.0	16.2	49.5	16.7	17.6
2014Q4 <sup>3</sup>	100.0	15.6	49.6	15.7	19.0

**TABLE 4A - HISTORICAL TABLE OF CURRENTLY EMPLOYED PERSONS BY LEVEL OF EDUCATION  
(PERCENTAGE) - MALE**

Year	Total	Level of education			
		Grade 5 & Below	Grades 6 - 10	GCE (O.L)/ NCGE	GCE (A.L)/ HNCE & above
2006 <sup>1</sup>	100.0	21.0	50.3	16.6	12.1
2007 <sup>1</sup>	100.0	20.1	51.2	15.6	13.0
2008 <sup>2</sup>	100.0	20.1	50.6	16.1	13.2
2009 <sup>2</sup>	100.0	20.3	50.7	15.7	13.3
2010 <sup>2</sup>	100.0	19.1	51.6	16.2	13.1
2011 <sup>3</sup>	100.0	18.3	51.0	16.1	14.6
2012 <sup>3</sup>	100.0	17.9	51.1	17.8	13.2
2013 <sup>3</sup>	100.0	17.6	51.4	16.2	14.8
2014Q1 <sup>3</sup>	100.0	16.9	51.8	16.2	15.0
2014Q2 <sup>3</sup>	100.0	16.9	51.4	16.2	15.5
2014Q3 <sup>3</sup>	100.0	16.0	53.5	16.5	13.9
2014Q4 <sup>3</sup>	100.0	15.5	53.8	15.9	14.8

**TABLE 4B - HISTORICAL TABLE OF CURRENTLY EMPLOYED PERSONS BY LEVEL OF EDUCATION  
(PERCENTAGE) - FEMALE**

Year	Total	Level of education			
		Grade 5 & Below	Grades 6 - 10	GCE (O.L)/ NCGE	GCE (A.L)/ HNCE & above
2006 <sup>1</sup>	100.0	24.4	40.3	17.1	18.3
2007 <sup>1</sup>	100.0	23.0	41.0	15.5	20.5
2008 <sup>2</sup>	100.0	22.2	41.3	15.3	21.2
2009 <sup>2</sup>	100.0	22.5	40.6	15.3	21.7
2010 <sup>2</sup>	100.0	22.3	41.3	15.3	21.1
2011 <sup>3</sup>	100.0	19.8	42.2	15.0	23.1
2012 <sup>3</sup>	100.0	19.8	39.2	17.2	23.8
2013 <sup>3</sup>	100.0	18.5	41.0	15.7	24.8
2014Q1 <sup>3</sup>	100.0	16.7	41.2	15.1	27.0
2014Q2 <sup>3</sup>	100.0	16.8	41.4	15.9	25.9
2014Q3 <sup>3</sup>	100.0	16.4	41.6	17.1	24.8
2014Q4 <sup>3</sup>	100.0	15.8	41.6	15.4	27.2

<sup>1</sup> - Excluding Northern & Eastern provinces

<sup>3</sup> - All the districts are included

<sup>2</sup> - Including Eastern province but Excluding Northern province

**TABLE 5 - HISTORICAL TABLE OF CURRENTLY EMPLOYED PERSONS BY EMPLOYMENT STATUS  
(PERCENTAGE) - BOTH SEXES**

YEAR	TOTAL EMPLOYED	EMPLOYEE			EMPLOYER	OWN ACCOUNT WORKER	UNPAID FAMILY WORKER
		TOTAL	PUBLIC	PRIVATE			
2006 <sup>1</sup>	100.0	55.7	13.5	42.2	3.1	30.9	10.3
2007 <sup>1</sup>	100.0	56.6	13.8	42.8	2.9	30.4	10.1
2008 <sup>2</sup>	100.0	56.5	15.3	41.3	2.9	30.3	10.3
2009 <sup>2</sup>	100.0	57.7	15.5	42.2	2.6	29.2	10.4
2010 <sup>2</sup>	100.0	55.5	14.3	41.3	2.6	31.5	10.3
2011 <sup>3</sup>	100.0	55.0	14.4	40.5	2.9	31.5	10.7
2012 <sup>3</sup>	100.0	56.5	15.2	41.3	2.8	31.9	8.8
2013 <sup>3</sup>	100.0	55.7	15.1	40.6	3.0	32.2	9.1
2014Q1 <sup>3</sup>	100.0	57.3	16.2	41.1	3.0	31.9	7.8
2014Q2 <sup>3</sup>	100.0	56.7	15.7	41.0	2.6	31.8	8.9
2014Q3 <sup>3</sup>	100.0	55.2	14.7	40.5	3.1	32.3	9.4
2014Q4 <sup>3</sup>	100.0	57.3	15.3	41.9	2.3	31.8	8.6

**TABLE 5A - HISTORICAL TABLE OF CURRENTLY EMPLOYED PERSONS BY EMPLOYMENT STATUS  
(PERCENTAGE) - MALE**

YEAR	TOTAL EMPLOYED	EMPLOYEE			EMPLOYER	OWN ACCOUNT WORKER	UNPAID FAMILY WORKER
		TOTAL	PUBLIC	PRIVATE			
2006 <sup>1</sup>	100.0	56.1	12.3	43.8	4.4	35.3	4.2
2007 <sup>1</sup>	100.0	57.3	12.1	45.2	4.0	34.5	4.3
2008 <sup>2</sup>	100.0	57.6	13.7	43.9	4.1	34.2	4.1
2009 <sup>2</sup>	100.0	59.2	13.7	45.5	3.6	33.0	4.3
2010 <sup>2</sup>	100.0	56.2	12.8	43.4	3.5	36.0	4.3
2011 <sup>3</sup>	100.0	55.8	12.7	43.1	3.8	36.0	4.3
2012 <sup>3</sup>	100.0	56.6	12.8	43.8	3.8	35.9	3.6
2013 <sup>3</sup>	100.0	56.6	12.8	43.9	4.2	36.2	3.0
2014Q1 <sup>3</sup>	100.0	57.7	13.3	44.4	4.0	36.1	2.2
2014Q2 <sup>3</sup>	100.0	57.1	13.5	43.7	3.4	36.4	3.0
2014Q3 <sup>3</sup>	100.0	56.9	12.6	44.3	3.9	35.8	3.4
2014Q4 <sup>3</sup>	100.0	57.8	12.9	45.0	3.2	36.4	2.5

**TABLE 5B - HISTORICAL TABLE OF CURRENTLY EMPLOYED PERSONS BY EMPLOYMENT STATUS  
(PERCENTAGE) - FEMALE**

YEAR	TOTAL EMPLOYED	EMPLOYEE			EMPLOYER	OWN ACCOUNT WORKER	UNPAID FAMILY WORKER
		TOTAL	PUBLIC	PRIVATE			
2006 <sup>1</sup>	100.0	54.9	15.7	39.2	0.8	22.8	21.5
2007 <sup>1</sup>	100.0	55.2	17.1	38.1	0.7	22.5	21.6
2008 <sup>2</sup>	100.0	54.4	18.2	36.2	0.7	22.8	22.1
2009 <sup>2</sup>	100.0	55.0	19.0	36.0	0.9	22.1	22.0
2010 <sup>2</sup>	100.0	54.3	17.3	37.0	0.8	22.6	22.3
2011 <sup>3</sup>	100.0	53.2	17.8	35.4	0.9	22.7	23.2
2012 <sup>3</sup>	100.0	56.1	19.9	36.2	0.9	23.6	19.4
2013 <sup>3</sup>	100.0	54.0	19.4	34.6	0.9	24.6	20.5
2014Q1 <sup>3</sup>	100.0	56.6	21.8	34.8	1.1	23.8	18.6
2014Q2 <sup>3</sup>	100.0	55.9	20.0	35.9	1.0	22.6	20.4
2014Q3 <sup>3</sup>	100.0	52.0	18.8	33.2	1.4	25.4	21.2
2014Q4 <sup>3</sup>	100.0	56.2	20.1	36.1	0.4	23.0	20.4

These figures are to be treated with caution as the corresponding CV (Coefficient of variation) values are high.

<sup>1</sup> - Excluding Northern & Eastern provinces

<sup>3</sup> - All the districts are included

<sup>2</sup> - Including Eastern province but Excluding Northern province

**Table 6 - Currently Employed person by Industry group (Based on ISIC Fourth Revision) - both sexes**

Year	Total	Industry Group																
		1	2	3	6	7	8	9	10	11	13	14	15	16	17	19	20	Other
2013Q1	8,451,187	2,384,795	91,095	1,562,593	619,699	1,179,540	538,086	172,303	60,176	171,119	78,545	113,199	680,605	304,780	135,555	135,519	181,797	41,783
2013Q2	8,475,419	2,668,059	124,897	1,481,903	610,893	1,182,254	529,608	205,370	63,923	149,866	73,979	92,527	535,117	290,140	134,632	132,309	140,883	59,059
2013Q3	8,424,409	2,417,569	99,365	1,559,801	563,178	1,152,871	468,023	179,715	81,633	167,329	71,116	112,284	631,193	379,552	146,451	128,103	220,715	45,509
2013Q4	8,319,680	2,546,819	85,254	1,451,858	558,101	1,088,977	534,329	195,489	44,829	123,793	48,217	110,098	670,239	343,814	147,440	131,996	185,713	52,715
2013	8,417,674	2,504,310	100,153	1,514,039	587,968	1,150,911	517,511	188,219	62,640	153,027	67,964	107,027	629,288	329,572	141,020	131,982	182,277	49,766
2014Q1	8,407,212	2,222,097	84,766	1,677,763	576,376	1,093,264	553,820	217,762	74,883	161,334	54,578	99,456	650,652	372,222	143,603	140,825	234,157	49,654
2014Q2	8,413,171	2,368,845	76,340	1,511,065	602,333	1,136,098	479,568	169,433	86,659	169,762	60,098	116,147	684,770	338,812	141,213	145,795	259,000	67,234
2014Q3	8,479,829	2,455,034	92,293	1,522,508	638,374	1,130,811	570,134	218,904	53,217	152,603	41,595	106,779	667,197	292,472	123,828	160,968	180,015	73,098
2014Q4	8,395,762	2,552,541	63,375	1,429,636	644,413	1,082,248	507,602	192,308	70,667	159,215	53,955	126,958	617,131	361,229	143,487	127,970	204,680	58,347

Note: These Industry groups are based on ISIC - Rev. 4

1 Agriculture, forestry and fishing (A)

2 Mining & quarrying (B)

3 Manufacturing (C)

6 Construction, Electricity, gas, steam and air conditioning supply, Water supply, sewerage, waste management and remediation activities (D, E,F)

7 Wholesale and retail trade, repair of motor vehicles and motor cycles(G)

8 Transportation and storage (H)

9 Accommodation and food services activities (I)

10 Information and communication (J)

11 Financial and insurance activities (K)

13 Professional, scientific and technical activities (M)

14 Administrative and support service activities (N)

15 Public administration and defence compulsory social security (O)

16 Education (P)

17 Human health and social work activities (Q)

19 Other service activities (S)

20 Activities of households as employers; undifferentiated goods and services - producing activities of households for own use (T)

Other

Other

12 Real estate activities (L)

18 Arts, entertainment and recreation (R)

21 Activities of extra territorial organizations & bodies (U)

**Table 6A - Currently Employed person by Industry group (Based on ISIC Fourth Revision) - Male**

Year	Total	Industry Group																
		1	2	3	6	7	8	9	10	11	13	14	15	16	17	19	20	Other
2013Q1	5,494,375	1,443,103	85,549	832,273	602,776	815,614	510,089	125,664	48,189	94,623	48,198	81,373	440,604	97,611	52,826	86,219	94,956	34,708
2013Q2	5,589,387	1,648,760	105,142	791,286	595,611	848,894	496,622	137,380	45,849	93,209	47,087	66,670	336,147	78,087	61,901	98,629	90,438	47,674
2013Q3	5,460,400	1,477,031	90,801	838,262	544,400	838,078	447,558	133,081	61,564	93,653	44,313	81,311	395,070	116,053	48,422	91,193	121,393	38,217
2013Q4	5,451,097	1,562,658	71,056	738,504	540,923	771,563	523,085	145,083	35,445	75,366	27,873	85,112	458,554	100,928	54,615	94,114	126,238	39,980
2013	5,498,815	1,532,888	88,137	800,081	570,928	818,537	494,339	135,302	47,762	89,213	41,868	78,616	407,594	98,169	54,441	92,539	108,256	40,144
2014Q1	5,484,351	1,362,507	82,150	887,088	553,770	785,855	537,980	138,400	58,939	95,721	33,216	83,886	410,024	111,607	53,901	107,445	140,438	41,424
2014Q2	5,560,143	1,470,647	67,481	795,310	574,646	840,352	465,922	115,006	65,719	96,023	43,269	89,768	442,802	106,991	69,703	116,445	149,253	50,806
2014Q3	5,613,970	1,515,812	85,601	806,493	602,794	778,216	555,183	162,370	43,786	87,096	30,185	84,722	437,431	94,410	57,740	118,083	95,972	58,075
2014Q4	5,534,061	1,582,296	60,761	761,243	625,767	766,811	489,874	133,826	48,503	85,417	32,553	101,617	401,658	106,273	59,465	105,392	133,730	38,873

Note: These Industry groups are based on ISIC - Rev. 4

These figures are to be treated with caution as the corresponding CV (Coefficient of variation) values are high.

1 Agriculture, forestry and fishing (A)

2 Mining & quarrying (B)

3 Manufacturing (C)

6 Construction, Electricity, gas, steam and air conditioning supply, Water supply, sewerage, waste management and remediation activities (D, E,F)

7 Wholesale and retail trade, repair of motor vehicles and motor cycles(G)

8 Transportation and storage (H)

9 Accommodation and food services activities (I)

10 Information and communication (J)

11 Financial and insurance activities (K)

13 Professional, scientific and technical activities (M)

14 Administrative and support service activities (N)

15 Public administration and defence compulsory social security (O)

16 Education (P)

17 Human health and social work activities (Q)

19 Other service activities (S)

20 Activities of households as employers; undifferentiated goods and services - producing activities of households for own use (T)

Other

Other

12 Real estate activities (L)

18 Arts, entertainment and recreation (R)

21 Activities of extra territorial organizations & bodies (U)

**Table 6B - Currently Employed person by Industry group (Based on ISIC Fourth Revision) - Female**

Year	Industry Group																	
	Total	1	2	3	6	7	8	9	10	11	13	14	15	16	17	19	20	Other
2013Q1	2,956,812	941,691	5,546	730,319	16,923	363,926	27,996	46,639	11,987	76,496	30,347	31,826	240,001	207,169	82,729	49,300	86,840	7,076
2013Q2	2,886,033	1,019,299	19,755	690,617	15,282	333,360	32,986	67,990	18,074	56,658	26,891	25,857	198,970	212,054	72,731	33,680	50,445	11,384
2013Q3	2,964,009	940,538	8,564	721,539	18,777	314,793	20,464	46,634	20,069	73,677	26,804	30,973	236,124	263,500	98,029	36,910	99,322	7,292
2013Q4	2,868,583	984,161	14,198	713,354	17,178	317,415	11,244	50,405	9,384	48,427	20,344	24,986	211,684	242,886	92,825	37,882	59,475	12,735
2013	2,918,859	971,422	12,016	713,957	17,040	332,374	23,173	52,917	14,878	63,814	26,096	28,411	221,695	231,402	86,578	39,443	74,021	9,622
2014Q1	2,922,861	859,591	2,616	790,675	22,606	307,409	15,840	79,363	15,944	65,613	21,362	15,571	240,628	260,614	89,701	33,379	93,719	8,231
2014Q2	2,853,028	898,198	8,859	715,755	27,687	295,746	13,646	54,427	20,940	73,739	16,829	26,379	241,968	231,821	71,510	29,350	109,748	16,428
2014Q3	2,865,859	939,222	6,691	716,014	35,580	352,596	14,951	56,534	9,431	65,507	11,411	22,057	229,766	198,061	66,088	42,885	84,044	15,022
2014Q4	2,861,702	970,245	2,614	668,393	18,646	315,437	17,728	58,482	22,164	73,798	21,401	25,341	215,474	254,956	84,022	22,577	70,950	19,474

Note: These Industry groups are based on ISIC - Rev. 4

These figures are to be treated with caution as the corresponding CV (Coefficient of variation) values are high.

1 Agriculture, forestry and fishing (A)

2 Mining & quarrying (B)

3 Manufacturing (C)

6 Construction, Electricity, gas, steam and air conditioning supply, Water supply, sewerage, waste management and remediation activities (D, E,F)

7 Wholesale and retail trade, repair of motor vehicles and motor cycles(G)

8 Transportation and storage (H)

9 Accommodation and food services activities (I)

10 Information and communication (J)

11 Financial and insurance activities (K)

13 Professional, scientific and technical activities (M)

14 Administrative and support service activities (N)

15 Public administration and defence compulsory social security (O)

16 Education (P)

17 Human health and social work activities (Q)

19 Other service activities (S)

20 Activities of households as employers; undifferentiated goods and services - producing activities of households for own use (T)

Other

Other

12 Real estate activities (L)

18 Arts, entertainment and recreation (R)

21 Activities of extra territorial organizations & bodies (U)

**Table 6C: Historical table of currently employed population by major industry group - Both sexes**

Major Industry Group	Year								
	2013Q1	2013Q2	2013Q3	2013Q4	2013	2014Q1	2014Q2	2014Q3	2014Q4
Total	8,451,187	8,475,419	8,424,409	8,319,680	8,417,674	8,407,212	8,413,171	8,479,829	8,395,762
Agriculture	2,384,795	2,668,059	2,417,569	2,546,819	2,504,310	2,222,097	2,368,845	2,455,034	2,552,541
Industry	2,273,387	2,217,693	2,222,344	2,095,213	2,202,159	2,338,905	2,189,738	2,253,174	2,134,233
Services	3,793,005	3,589,668	3,784,496	3,677,649	3,711,204	3,846,210	3,854,588	3,771,621	3,708,988

**Table 6D: Historical table of currently employed population by major industry group (percentage) - Both sexes**

Major Industry Group	Year								
	2013Q1	2013Q2	2013Q3	2013Q4	2013	2014Q1	2014Q2	2014Q3	2014Q4
Total	100.0	100.0	100.0	100.0	100.0	100.0	100.0	100.0	100.0
Agriculture	28.2	31.5	28.7	30.6	29.8	26.4	28.2	29.0	30.4
Industry	26.9	26.2	26.4	25.2	26.2	27.8	26.0	26.6	25.4
Services	44.9	42.4	44.9	44.2	44.1	45.7	45.8	44.5	44.2

Note: These Industry groups are based on ISIC - Rev. 4

**Agriculture**

1. Agriculture Forestry and Fishery (A)

**Industries**

1. Mining & Quarrying (B)
2. Manufacturing (C)
3. Construction, Electricity, gas, steam and air conditioning supply, Water supply, sewerage, waste management and remediation activities (D, E,F)

**Services**

1. Wholesale and retail trade, repair of motor vehicles and motor cycles(G)
2. Transportation and storage (H)
3. Accommodation and food services activities (I)
4. Information and communication (J)
5. Financial and insurance activities (K)
6. Professional, scientific and technical activities (M)
7. Administrative and support service activities (N)
8. Public administration and defence compulsory social security (O)
9. Education (P)
10. Human health and social work activities (Q)
11. Other service activities (S)
12. Activities of households as employers; undifferentiated goods and services - producing activities of households for own use (T)
13. Real estate activities (L) Arts, entertainment and recreation ( R) Activities of extra territorial organizations & bodies (U)

**Table 7 - Currently Employed person by Occupation group (Based on ISCO 08) - Both sexes**

Year	Total	Occupation group									
		1	2	3	4	5	6	7	8	9	10
2013Q1	8,451,187	386,014	529,198	526,092	326,261	939,243	1,614,985	1,439,627	755,911	1,861,809	72,047
2013Q2	8,475,419	399,208	479,978	449,325	264,479	932,950	1,768,371	1,510,774	734,832	1,888,189	47,313
2013Q3	8,424,409	410,962	568,194	560,401	312,735	953,482	1,526,744	1,436,420	660,846	1,959,064	35,561
2013Q4	8,319,680	377,366	552,416	463,065	341,943	916,510	1,589,784	1,369,946	680,608	1,966,023	62,019
2013	8,417,674	393,388	532,446	499,721	311,354	935,546	1,624,971	1,439,192	708,049	1,918,771	54,235
2014Q1	8,407,212	384,205	532,961	539,418	346,957	1,045,104	1,616,420	1,470,432	712,451	1,732,228	27,036
2014Q2	8,413,171	354,097	584,337	476,300	362,434	1,032,993	1,681,506	1,411,315	631,652	1,848,361	30,175
2014Q3	8,479,829	411,281	497,037	497,843	367,870	953,240	1,713,156	1,470,774	746,512	1,780,437	41,679
2014Q4	8,395,762	379,795	539,656	489,489	364,579	939,767	1,800,334	1,438,450	712,793	1,697,134	33,767

These figures are to be treated with caution as the corresponding CV (Coefficient of variation) values are high.

- |   |  |    |   |
|---|--|----|---|
| 1 | Managers, Senior Officials and Legislators | 6  | Skilled Agricultura, Forestry and Fishery workers   |
| 2 | Professionals                              | 7  | Craft and Related Trades workers                    |
| 3 | Technicians and Associate Professionals    | 8  | Plant and Machine operators and Assemblers          |
| 4 | Clerks and Clerical support workers        | 9  | Elementary occupations                              |
| 5 | Services and Sales workers                 | 10 | Armed Forces Occupations & unidentified occupations |

**Table 7A - Currently Employed person by Occupation group (Based on ISCO 08) - Male**

Year	Total	Occupation group									
		1	2	3	4	5	6	7	8	9	10
2013Q1	5,494,375	263,261	208,292	331,813	153,235	638,914	1,049,024	991,394	638,205	1,159,943	60,293
2013Q2	5,589,387	292,861	177,098	306,841	129,309	639,673	1,154,039	1,047,750	650,240	1,150,102	41,474
2013Q3	5,460,400	286,320	209,881	342,750	164,472	680,057	992,438	970,236	574,852	1,208,337	31,056
2013Q4	5,451,097	274,564	219,229	302,044	167,280	632,750	1,060,751	891,425	596,679	1,245,865	60,510
2013	5,498,815	279,252	203,625	320,862	153,574	647,849	1,064,063	975,201	614,994	1,191,062	48,333
2014Q1	5,484,351	284,081	171,495	351,237	179,010	720,092	1,018,793	948,457	631,067	1,153,083	27,036
2014Q2	5,560,143	275,261	218,664	328,830	171,161	744,115	1,094,956	985,670	538,805	1,173,692	28,989
2014Q3	5,613,970	302,566	200,880	329,244	163,200	654,527	1,132,517	986,275	663,902	1,141,161	39,698
2014Q4	5,534,061	287,961	177,200	329,977	177,326	650,706	1,169,644	966,616	628,141	1,112,722	33,767

**Table 7B - Currently Employed person by Occupation group (Based on ISCO 08) - Female**

Year	Total	Occupation group									
		1	2	3	4	5	6	7	8	9	10
2013Q1	2,956,812	122,753	320,906	194,279	173,026	300,328	565,961	448,233	117,706	701,866	11,754
2013Q2	2,886,033	106,347	302,880	142,485	135,170	293,277	614,332	463,024	84,592	738,087	5,839
2013Q3	2,964,009	124,641	358,312	217,652	148,262	273,425	534,307	466,184	85,994	750,726	4,505
2013Q4	2,868,583	102,802	333,187	161,021	174,662	283,761	529,033	478,521	83,929	720,159	1,509
2013	2,918,859	114,136	328,821	178,859	157,780	287,698	560,908	463,990	93,055	727,709	5,902
2014Q1	2,922,861	100,124	361,466	188,181	167,947	325,012	597,626	521,975	81,384	579,145	..
2014Q2	2,853,028	78,836	365,672	147,470	191,273	288,878	586,550	425,645	92,847	674,670	1,186
2014Q3	2,865,859	108,716	296,157	168,599	204,670	298,712	580,639	484,499	82,610	639,275	1,982
2014Q4	2,861,702	91,834	362,455	159,512	187,253	289,060	630,689	471,833	84,652	584,412	..

.. Negligible

These figures are to be treated with caution as the corresponding CV (Coefficient of variation) values are high.

- |   |  |    |   |
|---|--|----|---|
| 1 | Managers, Senior Officials and Legislators | 6  | Skilled Agriculture, Forestry and Fishery workers   |
| 2 | Professionals                              | 7  | Craft and Related Trades workers                    |
| 3 | Technicians and Associate Professionals    | 8  | Plant and Machine operators and Assemblers          |
| 4 | Clerks and Clerical support workers        | 9  | Elementary occupations                              |
| 5 | Services and Sales workers                 | 10 | Armed Forces Occupations & unidentified occupations |



**TABLE 8 - CURRENTLY EMPLOYED PERSONS BY HOURS PER WEEK ACTUALLY WORKED AT THE MAIN JOB AND MAJOR INDUSTRIAL GROUP (PERCENTAGE) - BOTH SEXES**

MAJOR INDUSTRIAL GROUP	TOTAL	0 *	1 - 9	10 - 19	20 - 29	30 - 39	40 - 49	50 & OVER
Total	100.0	3.8	1.3	3.8	6.8	13.8	40.0	30.4
1	100.0	5.1	2.6	7.1	11.8	20.1	38.6	14.6
2	100.0	4.1	..	3.9	13.1	6.6	26.8	45.5
3	100.0	2.4	0.6	3.9	5.2	9.5	42.3	36.2
6	100.0	4.7	1.7	3.4	7.6	11.4	44.9	26.3
7	100.0	1.9	0.5	2.3	4.2	8.5	31.4	51.3
8	100.0	2.7	0.6	2.4	3.2	7.2	31.5	52.5
9	100.0	0.6	..	0.4	5.4	13.2	30.3	50.0
10	100.0	..	6.6	..	3.7	7.2	48.7	33.9
11	100.0	2.4	..	..	1.2	4.8	62.1	29.5
13	100.0	1.3	..	..	2.6	16.1	56.0	24.0
14	100.0	1.3	1.5	..	2.0	6.3	33.5	55.5
15	100.0	3.9	0.6	0.4	1.4	7.5	59.6	26.7
16	100.0	11.0	1.5	2.9	4.6	44.2	29.2	6.6
17	100.0	1.2	..	0.2	2.4	5.0	53.5	37.8
19	100.0	4.7	..	2.2	7.2	16.8	31.2	37.9
20	100.0	3.5	0.8	3.3	8.0	7.9	40.4	36.0
Other	100.0	3.3	..	..	6.1	3.8	38.5	48.3

\* Has a job but not at work during the reference week

.. Negligible

These figures are to be treated with caution as the corresponding CV (Coefficient of variation) values are high.

**Industry group**

- 1 Agriculture, forestry and fishing (A)
- 2 Mining & quarrying (B)
- 3 Manufacturing (C)
- 6 Construction, Electricity, gas, steam and air conditioning supply, Water supply, sewerage, waste management and remediation activities (D, E,F)
- 7 Wholesale and retail trade, repair of motor vehicles and motor cycles(G)
- 8 Transportation and storage (H)
- 9 Accommodation and food services activities (I)
- 10 Information and communication (J)
- 11 Financial and insurance activities (K)
- 13 Professional, scientific and technical activities (M)
- 14 Administrative and support service activities (N)
- 15 Public administration and defence compulsory social security (O)
- 16 Education (P)
- 17 Human health and social work activities (Q)
- 19 Other service activities (S)
- 20 Activities of households as employers; undifferentiated goods and services - producing activities of households for own use (T)
- Other

**Other**

- 12 Real estate activities (L)
- 18 Arts, entertainment and recreation (R)
- 21 Activities of extra territorial organizations & bodies (U)

**TABLE 9 - HISTORICAL TABLE OF CURRENTLY UNEMPLOYED PERSONS BY AGE GROUPS  
(PERCENTAGE) - BOTH SEXES**

YEAR	TOTAL	AGE GROUPS				
		15 - 19 YRS	20 - 24 YRS	25 - 29 YRS	30 - 39 YRS	40 + YRS
2006 <sup>1</sup>	100.0	17.5	39.3	21.5	11.9	9.8
2007 <sup>1</sup>	100.0	15.7	41.2	19.7	13.1	10.4
2008 <sup>2</sup>	100.0	15.8	38.4	21.5	13.6	10.6
2009 <sup>2</sup>	100.0	14.5	37.5	21.3	15.1	11.6
2010 <sup>2</sup>	100.0	14.8	38.7	21.2	14.7	10.6
2011 <sup>3</sup>	100.0	12.8	42.5	20.6	15.6	8.5
2012 <sup>3</sup>	100.0	14.2	40.6	18.8	15.6	10.7
2013 <sup>3</sup>	100.0	13.7	40.9	18.1	15.2	12.1
2014Q1 <sup>3</sup>	100.0	14.1	38.7	21.3	14.6	11.3
2014Q2 <sup>3</sup>	100.0	13.9	37.6	21.3	17.0	10.2
2014Q3 <sup>3</sup>	100.0	14.1	40.8	18.7	13.9	12.5
2014Q4 <sup>3</sup>	100.0	14.7	42.5	16.0	16.0	10.8

**TABLE 9A - HISTORICAL TABLE OF CURRENTLY UNEMPLOYED PERSONS BY AGE GROUPS  
(PERCENTAGE) - MALE**

YEAR	TOTAL	AGE GROUPS				
		15 - 19 YRS	20 - 24 YRS	25 - 29 YRS	30 - 39 YRS	40+ YRS
2006 <sup>1</sup>	100.0	21.2	40.1	18.4	8.3	11.9
2007 <sup>1</sup>	100.0	19.9	40.7	16.0	10.2	13.1
2008 <sup>2</sup>	100.0	19.4	37.8	19.5	9.4	13.9
2009 <sup>2</sup>	100.0	17.9	36.4	18.9	12.4	14.4
2010 <sup>2</sup>	100.0	19.6	41.2	15.5	11.7	12.0
2011 <sup>3</sup>	100.0	17.6	44.9	16.7	13.1	7.6
2012 <sup>3</sup>	100.0	19.5	41.6	17.1	12.4	9.4
2013 <sup>3</sup>	100.0	16.9	44.0	15.4	11.6	12.1
2014Q1 <sup>3</sup>	100.0	20.5	35.7	19.9	11.7	12.3
2014Q2 <sup>3</sup>	100.0	19.4	35.5	20.8	13.6	10.6
2014Q3 <sup>3</sup>	100.0	19.9	39.0	16.9	12.0	12.1
2014Q4 <sup>3</sup>	100.0	20.9	40.3	15.2	9.7	13.9

**TABLE 9B - HISTORICAL TABLE OF CURRENTLY UNEMPLOYED PERSONS BY AGE GROUPS  
(PERCENTAGE) - FEMALE**

YEAR	TOTAL	AGE GROUPS				
		15 - 19 YRS	20 - 24 YRS	25 - 29 YRS	30 - 39 YRS	40+ YRS
2006 <sup>1</sup>	100.0	14.4	38.7	24.2	14.9	7.9
2007 <sup>1</sup>	100.0	11.9	41.5	23.0	15.6	8.0
2008 <sup>2</sup>	100.0	12.9	38.9	23.2	17.0	8.0
2009 <sup>2</sup>	100.0	11.5	38.5	23.5	17.5	9.0
2010 <sup>2</sup>	100.0	10.7	36.5	26.1	17.4	9.3
2011 <sup>3</sup>	100.0	9.3	40.7	23.4	17.5	9.1
2012 <sup>3</sup>	100.0	9.4	39.8	20.3	18.6	11.9
2013 <sup>3</sup>	100.0	10.9	38.3	20.3	18.3	12.2
2014Q1 <sup>3</sup>	100.0	8.4	41.4	22.5	17.3	10.5
2014Q2 <sup>3</sup>	100.0	8.7	39.6	21.7	20.2	9.9
2014Q3 <sup>3</sup>	100.0	8.0	42.7	20.6	15.8	12.9
2014Q4 <sup>3</sup>	100.0	10.2	44.2	16.6	20.7	8.4

These figures are to be treated with caution as the corresponding CV (Coefficient of variation) values are high.

<sup>1</sup> - Excluding Northern & Eastern provinces

<sup>3</sup> - All the districts are included

<sup>2</sup> - Including Eastern province but Excluding Northern province

**TABLE 10 - HISTORICAL TABLE OF CURRENTLY UNEMPLOYED PERSONS BY LEVEL OF EDUCATION (PERCENTAGE) - BOTH SEXES**

YEAR	TOTAL	LEVEL OF EDUCATION			
		GRADE 5 & BELOW	GRADES 6 - 10	GCE(O/L) NCGE	GCE(A/L) HNCE & ABOVE
2006 <sup>1</sup>	100.0	4.5	41.8	26.7	27.0
2007 <sup>1</sup>	100.0	4.3	41.0	22.1	32.6
2008 <sup>2</sup>	100.0	4.5	39.3	23.4	32.8
2009 <sup>2</sup>	100.0	4.3	39.9	23.1	32.7
2010 <sup>2</sup>	100.0	2.7	34.9	22.7	39.7
2011 <sup>3</sup>	100.0	2.7	37.9	19.9	39.4
2012 <sup>3</sup>	100.0	2.6	37.4	27.3	32.8
2013 <sup>3</sup>	100.0	3.9	36.5	22.1	37.4
2014Q1 <sup>3</sup>	100.0	3.9	36.7	26.0	33.4
2014Q2 <sup>3</sup>	100.0	2.5	38.3	21.0	38.2
2014Q3 <sup>3</sup>	100.0	1.1	44.1	20.4	34.3
2014Q4 <sup>3</sup>	100.0	4.6	33.1	22.4	39.9

**TABLE 10A - HISTORICAL TABLE OF CURRENTLY UNEMPLOYED PERSONS BY LEVEL OF EDUCATION (PERCENTAGE) - MALE**

YEAR	TOTAL	LEVEL OF EDUCATION			
		GRADE 5 & BELOW	GRADES 6 - 10	GCE(O/L) NCGE	GCE(A/L) HNCE & ABOVE
2006 <sup>1</sup>	100.0	6.1	48.8	26.7	18.3
2007 <sup>1</sup>	100.0	5.8	49.4	24.5	20.3
2008 <sup>2</sup>	100.0	5.3	49.7	23.1	21.9
2009 <sup>2</sup>	100.0	4.4	48.0	25.3	22.3
2010 <sup>2</sup>	100.0	3.4	40.4	25.4	30.9
2011 <sup>3</sup>	100.0	2.0	47.6	20.4	29.9
2012 <sup>3</sup>	100.0	2.0	46.8	29.7	21.5
2013 <sup>3</sup>	100.0	4.6	43.6	24.3	27.5
2014Q1 <sup>3</sup>	100.0	5.3	50.3	26.3	18.1
2014Q2 <sup>3</sup>	100.0	1.8	46.8	24.5	26.9
2014Q3 <sup>3</sup>	100.0	..	55.0	17.4	27.5
2014Q4 <sup>3</sup>	100.0	6.1	42.9	21.5	29.5

**TABLE 10B - HISTORICAL TABLE OF CURRENTLY UNEMPLOYED PERSONS BY LEVEL OF EDUCATION (PERCENTAGE) - FEMALE**

YEAR	TOTAL	LEVEL OF EDUCATION			
		GRADE 5 & BELOW	GRADES 6 - 10	GCE(O/L) NCGE	GCE(A/L) HNCE & ABOVE
2006 <sup>1</sup>	100.0	3.1	35.8	26.7	34.3
2007 <sup>1</sup>	100.0	3.0	33.5	19.9	43.6
2008 <sup>2</sup>	100.0	3.8	30.9	23.7	41.7
2009 <sup>2</sup>	100.0	4.3	32.5	21.1	42.1
2010 <sup>2</sup>	100.0	2.1	30.1	20.5	47.3
2011 <sup>3</sup>	100.0	3.3	30.7	19.5	46.5
2012 <sup>3</sup>	100.0	3.0	28.8	25.1	43.1
2013 <sup>3</sup>	100.0	3.2	30.4	20.3	46.1
2014Q1 <sup>3</sup>	100.0	2.6	24.6	25.7	47.1
2014Q2 <sup>3</sup>	100.0	3.1	30.3	17.7	48.9
2014Q3 <sup>3</sup>	100.0	2.3	32.7	23.6	41.4
2014Q4 <sup>3</sup>	100.0	3.5	25.8	23.1	47.6

These figures are to be treated with caution as the corresponding CV (Coefficient of variation) values are high.

<sup>1</sup> - Excluding Northern & Eastern provinces

<sup>3</sup> - All the districts are included

<sup>2</sup> - Including Eastern province but Excluding Northern province

**TABLE 11 - CURRENTLY UNEMPLOYED PERSONS BY SEX AND DURATION OF UNEMPLOYMENT**

(2014 4<sup>th</sup> Quarter)

Sex	Total	Duration		
		Less than 6 months	6 to less than 12 months	12+ months
Both sexes	387104	43620	265795	77689
%	100.0	11.3	68.7	20.1
Male	164232	8117	110613	45503
%	100.0	4.9	67.4	27.7
Female	222872	35503	155182	32186
%	100.0	15.9	69.6	14.4

These figures are to be treated with caution as the corresponding CV (Coefficient of variation) values are high.

## STANDARD ERROR AND COEFFICIENT OF VARIATION OF SELECTED VARIABLES

	Estimated Value	Standard Error	Coefficient of Variation (%)	Estimated Value (Ratio)	Standard Error	Coefficient of Variation (%)
(2014 3 <sup>rd</sup> Quarter )						
<b>General labour force characteristics</b>						
Population ( 15 years & over)	16,607,868	201,850	1.2			
Employed Population	8,395,762	125,525	1.5			
Unemployed Population	387,104	28,837	7.4			
Employment Rate	-	-	-	95.593	0.309	0.324
Unemployment Rate	-	-	-	4.407	0.309	7.017
Labour Force	8,782,867	133,549	1.5			
Not in Labour Force	7,825,001	132,127	1.7			
<b>Employed persons by major industry Groups</b>						
1	2,552,541	103,254	4.0			
2	63,375	13,282	21.0			
3	1,429,636	57,074	4.0			
6	644,413	39,012	6.1			
7	1,082,248	49,913	4.6			
8	507,602	29,307	5.8			
9	192,308	20,907	10.9			
10	70,667	10,338	14.6			
11	159,215	17,138	10.8			
13	53,955	10,935	20.3			
14	126,958	12,615	9.9			
15	617,131	35,558	5.8			
16	361,229	26,949	7.5			
17	143,487	15,812	11.0			
19	127,970	13,023	10.2			
20	204,680	20,931	10.2			
Other	58,347	8,061	13.8			
<b>Unemployed persons by level of education</b>						
Below grade 5	17,847	5,819	32.6			
Grade 5 - 9/Year 6 - 10	128,047	17,480	13.7			
G.C.E.(O/L)/N.C.G.E.	86,692	12,306	14.2			
G.C.E.(A/L)/H.N.C.E. & above	154,518	16,460	10.7			
<b>Industry group</b>						
1 Agriculture, forestry and fishing (A)						
2 Mining & quarrying (B)						
3 Manufacturing (C)						
6 Construction, Electricity, gas, steam and air conditioning supply, Water supply, sewerage, waste management and remediation activities (D, E,F)						
7 Wholesale and retail trade, repair of motor vehicles and motor cycles(G)						
8 Transportation and storage (H)						
9 Accommodation and food services activities (I)						
10 Information and communication (J)						
11 Financial and insurance activities (K)						
13 Professional, scientific and technical activities (M)						
14 Administrative and support service activities (N)						
15 Public administration and defence compulsory social security (O)						
16 Education (P)						
17 Human health and social work activities (Q)						
19 Other service activities (S)						
20 Activities of households as employers; undifferentiated goods and services - producing activities of households for own use (T)						
Other						
	Other					
	Real estate activities (L)					
	Arts, entertainment and recreation (R)					
	Activities of extra territorial organizations & bodies (U)					

# Special Statistical Appendix

## EXPLANATORY NOTES

---

### Coverage

Sri Lanka Labour Force Survey was designed to measure the levels and trends of employment, unemployment and labour force in Sri Lanka. This survey is being conducted quarterly, since the first quarter of 1990.

This quarterly survey of households is conducted through a scientifically selected sample designed to represent the civilian non-institutional population. Respondents are interviewed to obtain information about the employment status etc. of each member of the household 15 years of age and older.

The field work of the survey is done during the third week of each month, Monday through Sunday. This is known as the "survey week". The inquiry relates to activity or status are referred in the preceding week of the survey week; referred to as the "reference week".

The concepts and definitions underlying labour force data are as follows.

### Concepts & Definitions

1. **Labour force** : The labour force is composed of the economically active population 15 years of age and over.
2. **The Economically Active Population** : is defined as those persons who are/were employed or unemployed during the reference period of the survey.
3. **Employed** : Persons, who during the reference period, worked as paid employees, employers, own account workers (self employed), or unpaid family workers are said to be employed. This includes persons with a job but not at work during the reference period.
4. **Unemployed** : Persons who are seeking and available for work, but had no employment during the reference period.
5. **Currently Economically Active** : A person who was employed or unemployed during the current reference period is considered to be currently economically active.
6. **Not in the Labour Force (not economically active)** : Persons who were neither working nor available/looking for work are classified as "not in the labour force". Persons are not in the labour force for such reasons as: full time care of the household, full – time students, retired or old age, infirmed or disabled, or are not interested in working for one reason or another. Current and Usual definitions apply.
7. **Criteria for classification of underemployment**: In order to classify an employed persons as visibly underemployed,

***(i) If the person has worked less than the normal duration in his/her main activity***

In Sri Lanka scenario, 35 hours per week is taken as the cut-off point applicable to all workers, except government teachers. As in practice, though teachers do have a normal duration of work which is below the general cut-off point, they should be on a full time schedule according to the nature of their job. Further, those who do have a secondary job, or those who are employers, were considered as having worked the normal duration in their respective activity.

Therefore, if the person has worked less than the normal duration in his/her activity (as described above), then the person is further questioned to ascertain whether he/She is prepared and available for further work if provided. Such persons are considered underemployed in their respective employment.

***(ii) If the person has worked more than the normal duration in his/her activity***

If the person has worked even more than 35 hours as usually, but he has worked less than 35 hours actually in the reference period, only due to the off season or bad weather, such persons were also further questioned to check their underemployment situation, considering them as a special category.

**8. Informal Sector Employment**

In order to classify a person to be employed in informal sector employment, following information were used.

- (i) Registration of the organization
- (ii) Accounts keeping practices of the organization
- (iii) Total number of regular employees of the organization.

## Reliability of the estimates

Statistics based on the quarterly labour force data are subject to both sampling and non - sampling errors. When a sample rather than the entire population is surveyed, there is a chance that the sample estimates may differ from the "true" population values they represent.

The exact differences or sampling error, varies depending on the particular sample selected, and this variability is measured by the standard error of the estimate. There is about a 95 percent chance, or level of confidence, that an estimate based on a sample will differ by no more than 1.96 standard errors from the " true" population value, because of sampling error. Analyses relating to the Labour Force Survey are generally conducted at the 95 percent level of confidence.

For example, the confidence interval for the quarterly unemployment rate is on the order of

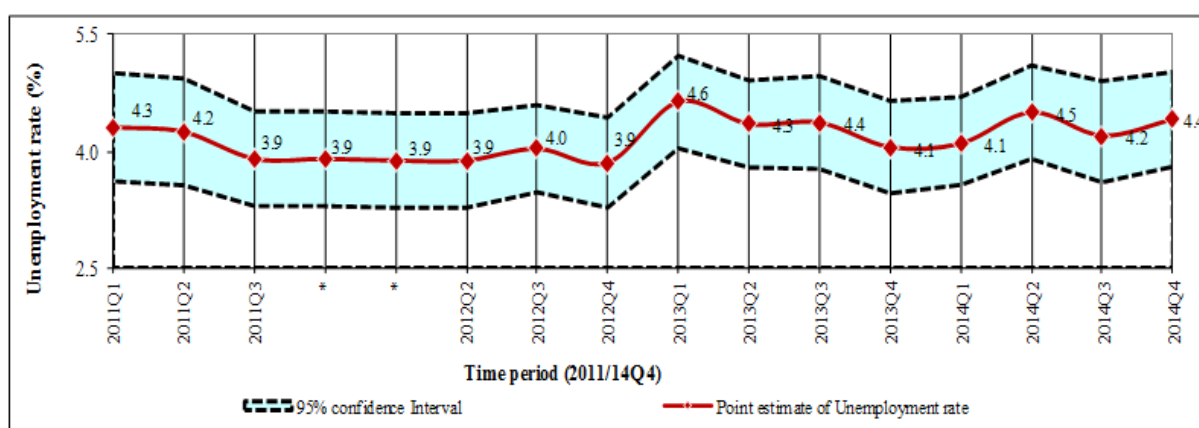
Estimated value *(of the unemployment rate)*  $\pm$  (standard error) \* ( 1.96)

$$6.4 \pm (0.4) * (1.96)$$
$$(6.4 \pm 0.784)$$

This means, the 95 percent confidence interval on the quarterly unemployment rate could range from (5.6 to 7.2) . This implies that there is about 95 percent chance that the "true" unemployment rate lies within this interval. This range includes all the values range from 5.6 to 7.2. When the comparison of this estimate is done between two quarters, if any of the value within the 95 percent confidence interval of one quarter overlaps with the confidence interval of the other , it means that the estimates of this two quarters *are not significantly different*.

Therefore, in each quarterly labour force report, a separate table is given including approximate standard errors for some selected variables, so that users could understand this statistical scenario clearly.

### ***Distribution of unemployment rates and 95% confidence intervals (2011Q1 - 2014Q4)***



**Note:**

- \* Survey was not conducted in the fourth quarter 2011 & first quarter 2012 due to activities of population census.
- Excluding Northern Province

As seen in figure 2, it is very important to note that, there were no statistically significant differences between the unemployment rates reported in different time periods of 2011/2014, when sampling error was considered.

## Change in survey schedule

Current survey concepts and methods are very similar to those introduced at the beginning of the survey in 1990. However, some changes have been made over the years to improve the accuracy and usefulness of the data. In January 2006, some improvements were made to the labour force survey schedule in order to fulfill the requirements of data users and also to provide additional information for planning purposes. The revision was made focusing on literacy, household economic activities, and informal sector employment and under employment etc.

From January , 2013 onwards, the lower bound of working age populations is considered as age 15, hence age 15 and over population is considered as working age population .The survey schedule is updated to obtain more precise information on following age, informal employment, informal sector, secondary occupation, wages & income , unemployment & trainings.

## New Industry & Occupation classifications

From January 2013 onward the survey uses new industry & occupation classifications, such as

SLIC Rev 4:- Sri Lanka Standard Industry Classification based on International Standard Industry classification - Rev.4 (ISIC Rev 4)

SLSCO 08:- Sri Lanka Standard Classification of Occupation -2008 based on International Standard Classification of Occupation-2008 (ISCO 2008)



**Note :**

It is important to note that, all the data published here are the estimates based on a sample survey and these are subject to sampling errors. These sampling errors can be statistically evaluated from the survey results. Therefore, sampling error is normally measured in terms of the standard error of the particular variable. Standard error could be used to calculate the confidence limits with a prescribed accuracy where the true value of the estimates lies.

Further reliability of the estimates can be expressed in terms of Coefficient of Variation (CV). The CV is a relative measure of the sampling error and is calculated as sampling error divided by the expected value of the given characteristic.

In view of this, following table is given to show the estimates for some selected variables, its standard error, CV and 95% Confidence interval.

It is also important to note that all the estimates we publish in this report are subject to sampling error and one should be cautious in the interpretation of results, especially with respect to the trends over time.

**Estimate of Confidence Intervals for some selected characteristics**

Year	Labour Force					Employed				
	No.	Standard error	C.V (%)	95% C.I.		No.	Standard error	C.V (%)	95% C.I.	
				Lower	Upper				Lower	Upper
2006 <sup>1</sup>	7,576,415	102,940	1.36	7,374,579	7,778,251	7,084,346	97,662	1.38	6,892,860	7,275,832
2007 <sup>1</sup>	7,472,932	104,109	1.39	7,268,805	7,677,059	7,026,733	99,184	1.41	6,832,262	7,221,204
2008 <sup>2</sup>	8,061,725	109,709	1.36	7,846,618	8,276,832	7,628,683	104,306	1.37	7,424,169	7,833,196
2009 <sup>2</sup>	8,051,089	107,213	1.33	7,840,876	8,261,302	7,579,835	102,161	1.35	7,379,527	7,780,143
2010 <sup>2</sup>	8,096,477	110,375	1.36	7,880,065	8,312,889	7,696,142	105,457	1.37	7,489,372	7,902,913
2011 <sup>3</sup>	8,543,776	163,523	1.91	8,223,154	8,864,397	8,186,305	157,067	1.92	7,878,342	8,494,268
2012 <sup>3</sup>	8,454,364	144,233	1.71	8,171,566	8,737,162	8,118,362	138,850	1.71	7,846,117	8,390,606
2013 <sup>3</sup>	8,802,113	61,249	0.70	8,682,006	8,922,219	8,417,674	59,454	0.71	8,301,087	8,534,261
2014Q1 <sup>3</sup>	8,769,538	126,314	1.44	8,521,442	9,017,634	8,407,212	122,418	1.46	8,166,767	8,647,658
2014Q2 <sup>3</sup>	8,811,836	128,636	1.46	8,559,176	9,064,496	8,413,171	122,901	1.46	8,171,774	8,654,567
2014Q3 <sup>3</sup>	8,853,951	134,556	1.52	8,589,660	9,118,242	8,479,829	131,427	1.55	8,221,683	8,737,975
2014Q4 <sup>3</sup>	8,782,867	133,549	1.52	8,520,552	9,045,182	8,395,762	125,525	1.50	8,149,208	8,642,317

Year	Unemployed					Unemployment Rate				
	No.	Standard error	C.V (%)	95% C.I.		Rate	Standard error	C.V (%)	95% C.I.	
				Lower	Upper				Lower	Upper
2006 <sup>1</sup>	492,069	15,823	3.2	461,045	523,093	6.5	0.2	2.95	6.1	6.9
2007 <sup>1</sup>	446,199	14,698	3.3	417,380	475,018	6.0	0.2	3.02	5.6	6.3
2008 <sup>2</sup>	433,042	14,975	3.5	403,680	462,405	5.4	0.2	3.14	5.0	5.7
2009 <sup>2</sup>	471,254	15,683	3.3	440,503	502,004	5.9	0.2	3.07	5.5	6.2
2010 <sup>2</sup>	400,335	14,742	3.7	371,430	429,240	4.9	0.2	3.39	4.6	5.3
2011 <sup>3</sup>	357,471	17,726	5.0	322,715	392,226	4.2	0.2	4.52	3.8	4.6
2012 <sup>3</sup>	336,002	15,267	4.5	306,067	365,938	4.0	0.2	4.17	3.6	4.3
2013 <sup>3</sup>	384,439	13,218	3.4	358,519	410,359	4.4	0.1	3.34	4.1	4.7
2014Q1 <sup>3</sup>	362,326	25,145	6.9	312,939	411,713	4.1	0.3	6.72	3.6	4.7
2014Q2 <sup>3</sup>	398,665	28,432	7.1	342,820	454,511	4.5	0.3	6.83	3.9	5.1
2014Q3 <sup>3</sup>	374,122	29,042	7.8	317,078	431,166	4.2	0.3	7.58	3.6	4.9
2014Q4 <sup>3</sup>	387,104	28,837	7.4	330,464	443,745	4.4	0.3	7.02	3.8	5.0

<sup>1</sup> - Excluding Northern & Eastern provinces

<sup>3</sup> - All the districts are included

<sup>2</sup> - Including Eastern province but Excluding Northern province

## ALTERNATIVE ESTIMATES

---

### Alternative Estimates of Employment, Unemployment and Labour Force Characteristics

Official employment, unemployment and labour force characteristics are estimated at the Sri Lanka Labour Force Survey, based on the internationally comparable concepts and definitions recommended by the ILO. However the validity of the concepts and definitions used at the survey is questioned very often in some forums, for the appropriateness of these concepts and definitions in the Sri Lankan context.

The concepts and definitions, which were found to be controversial, are as below.

- (1) **Number of Hours of Work** : A person who work **at least one hour** during the reference week, is considered **employed**, under these definitions.
- (2) **Working Age Population** : All persons of **age 10 years and over** are considered to be in the working age, before 2013. However, this was changed as age 15 and over from 2013 onward.
- (3) **Employment Status** : All,
  - a) Paid employees, (those who work for wages/salaries).
  - b) Employers (who have at least one paid employee under them).
  - c) Own account workers (who carry out the economic activity without having any paid employees).
  - d) Contributing family workers (who make their contribution to the economic activities carried out by their own household, without wages/salaries).

The validity of the above concepts and definitions is raised due to the following reasons.

- (1) **Number of Hours of Work** : Some pointed out that one hour per week is too low, to consider a person to be employed.
- (2) **Working Age Population** : Some pointed out those persons in the age group 10-14 yrs. are too young to be considered in the working age. (From 2013 onward the working age population is considered as age 15 and over).
- (3) **Employment Status** : Some pointed out that 'contributing family workers' may work in the family enterprise without payment because they have no other work, and so it is not appropriate to consider them as employed.

An attempt has been made to produce '**Alternative estimates of Employment, Unemployment and Labour Force Characteristics,**' by revising the original concepts and definitions so that the above issues are addressed as explained below.

The revisions made are,

- (1) **Number of Hours of Work** : Persons who work **20 hours or more per week only** are considered to be employed.
- (2) **Contributing Family Worker** : Contributing family workers are **not** considered as employed. Those contributing family workers who were reported to be seeking some other work are considered as **unemployed** and the rest of the unpaid family workers are considered as **economically inactive** (not in the labour force) so only, **a) paid employees b) employers and c) own account workers are considered to be employed.**

Following tables are based on the above alternative concepts and definitions.

## Alternative Estimates of Employment, Unemployment and Labour Force Characteristics

TABLE 1 - LABOUR FORCE STATUS OF HOUSEHOLD POPULATION 15 YEARS &amp; OVER (ALTERNATIVE ESTIMATES)

YEAR	HOUSEHOLD POPULATION (15 YEARS & OVER)		LABOUR FORCE PARTICI: RATE(%)	LABOUR FORCE				NOT IN LABOUR FORCE NUMBER
	TOTAL LABOUR FORCE	LABOUR FORCE		EMPLOYED		UNEMPLOYED		
				NUMBER	RATE (% TO TOTAL LABOUR FORCE)	NUMBER	RATE (% TO TOTAL LABOUR FORCE)	
2006 <sup>1</sup>	13,261,409	6,467,138	48.8	5,975,069	92.4	492,069	7.6	6,794,271
2007 <sup>1</sup>	13,459,252	6,425,260	47.7	5,979,061	93.1	446,199	6.9	7,033,992
2008 <sup>2</sup>	14,626,581	6,859,040	46.9	6,425,997	93.7	433,042	6.3	7,767,541
2009 <sup>2</sup>	14,876,264	6,836,598	46.0	6,365,344	93.1	471,254	6.9	8,039,665
2010 <sup>2</sup>	15,166,285	6,892,444	45.4	6,492,109	94.2	400,335	5.8	8,273,841
2011 <sup>3</sup>	16,122,111	7,196,558	44.6	6,839,087	95.0	357,471	5.0	8,925,553
2012 <sup>3</sup>	16,081,285	7,417,834	46.1	7,081,831	95.5	336,002	4.5	8,663,451
2013 <sup>3</sup>	16,359,761	7,619,111	46.6	7,234,672	95.0	384,439	5.0	8,740,650
2014Q1 <sup>3</sup>	16,415,549	7,713,441	47.0	7,351,115	95.3	362,326	4.7	8,702,108
2014Q2 <sup>3</sup>	16,454,039	7,507,970	45.6	7,109,305	94.7	398,665	5.3	8,946,069
2014Q3 <sup>3</sup>	16,645,617	7,760,707	46.6	7,386,585	95.2	374,122	4.8	8,884,910
2014Q4 <sup>3</sup>	16,607,868	7,718,285	46.5	7,331,180	95.0	387,104	5.0	8,889,584

TABLE 2 - HISTORICAL TABLE OF NUMBER AND RATE OF UNEMPLOYMENT BY AGE (ALTERNATIVE ESTIMATES)

YEAR	AGE GROUP											
	TOTAL		15 - 19		20 - 24		25 - 29		30 - 39		40 & ABOVE	
	NO.	RATE	NO.	RATE	NO.	RATE	NO.	RATE	NO.	RATE	NO.	RATE
2006 <sup>1</sup>	492,069	7.6	86,180	29.7	193,481	24.0	105,966	12.5	58,443	3.8	47,999	1.6
2007 <sup>1</sup>	446,199	6.9	69,856	27.7	183,617	24.0	87,993	10.7	58,252	3.8	46,480	1.5
2008 <sup>2</sup>	433,042	6.3	68,487	27.1	166,409	20.8	93,202	10.9	58,838	3.6	46,107	1.4
2009 <sup>2</sup>	471,254	6.9	68,447	27.3	176,801	24.9	100,508	11.9	70,988	4.2	54,511	1.6
2010 <sup>2</sup>	400,335	5.8	59,339	26.5	154,788	22.5	84,777	10.5	59,041	3.6	42,390	1.2
2011 <sup>3</sup>	357,471	5.0	45,900	21.0	151,882	20.7	73,545	8.7	55,880	3.2	30,263	0.8
2012 <sup>3</sup>	336,056	4.5	47,690	23.6	136,553	19.5	63,135	7.3	52,541	2.8	36,084	1.0
2013 <sup>3</sup>	384,439	5.0	52,652	22.9	157,353	21.7	69,413	8.5	58,352	3.1	46,669	1.2
2014Q1 <sup>3</sup>	362,383	4.7	52,022	24.3	139,740	20.8	77,111	9.6	49,981	2.6	43,471	1.1
2014Q2 <sup>3</sup>	398,665	5.3	55,541	27.0	149,858	21.4	84,739	11.0	67,757	3.5	40,770	1.0
2014Q3 <sup>3</sup>	374,122	4.8	52,713	25.8	152,728	23.4	70,033	9.1	51,832	2.6	46,816	1.1
2014Q4 <sup>3</sup>	387,165	5.0	56,924	26.5	164,642	23.4	61,800	7.6	62,054	3.2	41,684	1.0

<sup>1</sup> - Excluding Northern & Eastern provinces<sup>3</sup> - All the districts are included<sup>2</sup> - Including Eastern province but Excluding Northern province

**Table 3 - Currently Employed persons by Industry group (No. and percentage) (Based on ISIC Fourth Revision) - (Alternative estimates)**

Year	Industry group																	
	Total	1	2	3	6	7	8	9	10	11	13	14	15	16	17	19	20	Other
2013	No. <b>7,234,672</b>	1,797,192	92,742	1,360,236	561,214	989,320	499,257	160,616	59,656	151,882	64,976	103,930	620,201	305,115	136,759	116,217	170,324	45,035
	% <b>100.0</b>	24.8	1.3	18.8	7.8	13.7	6.9	2.2	0.8	2.1	0.9	1.4	8.6	4.2	1.9	1.6	2.4	0.6
2014Q1	No. <b>7,351,115</b>	1,582,602	81,454	1,549,883	536,076	955,973	534,383	189,878	70,893	161,334	50,358	97,547	642,333	349,500	140,445	135,070	224,192	49,195
	% <b>100.0</b>	21.5	1.1	21.1	7.3	13.0	7.3	2.6	1.0	2.2	0.7	1.3	8.7	4.8	1.9	1.8	3.0	0.7
2014Q2	No. <b>7,109,305</b>	1,661,053	64,663	1,326,868	560,905	986,968	468,404	146,567	76,456	157,900	54,193	110,756	633,359	294,558	136,378	137,194	236,557	56,524
	% <b>100.0</b>	23.4	0.9	18.7	7.9	13.9	6.6	2.1	1.1	2.2	0.8	1.6	8.9	4.1	1.9	1.9	3.3	0.8
2014Q3	No. <b>7,386,585</b>	1,761,362	89,493	1,391,596	613,641	993,541	551,062	188,890	53,217	151,747	39,266	105,323	663,141	287,227	120,909	147,317	166,061	62,793
	% <b>100.0</b>	23.8	1.2	18.8	8.3	13.5	7.5	2.6	0.7	2.1	0.5	1.4	9.0	3.9	1.6	2.0	2.2	0.9
2014Q4	No. <b>7,331,180</b>	1,859,358	60,921	1,318,926	607,965	944,046	489,881	176,797	66,015	159,215	53,955	122,399	611,243	343,167	143,246	124,345	191,352	58,347
	% <b>100.0</b>	25.4	0.8	18.0	8.3	12.9	6.7	2.4	0.9	2.2	0.7	1.7	8.3	4.7	2.0	1.7	2.6	0.8

Note: The tabulation groups based on ISIC (Rev.4) are indicated as A,B,C.....U. Due to the limitations on reliability ( based on CV),some of these groups have been combined.

**Industry Group**

1 Agriculture, forestry and fishing (A)

2 Mining &amp; quarrying (B)

3 Manufacturing (C)

6 Construction, Electricity, gas, steam and air conditioning supply, Water supply, sewerage, waste and remediation activities (D, E,F)

7 Wholesale and retail trade, repair of motor vehicles and motor cycles(G)

8 Transportation and storage (H)

9 Accommodation and food services activities (I)

10 Information and communication (J)

11 Financial and insurance activities (K)

13 Professional, scientific and technical activities (M)

14 Administrative and support service activities (N)

15 Public administration and defence compulsory social security (O)

16 Education (P)

17 Human health and social work activities (Q)

19 Other service activities (S)

20 Activities of households as employers; undifferentiated goods and services - producing activities of households for own use (T)

Other

Other

12 Real estate activities (L)

18 Arts, entertainment and recreation (R)

21 Activities of extra territorial organizations &amp; bodies (U)